



Twin Streams - Wai Oranga Rua ... live well in Paparoa

The Te Reo translation of **Twin Streams subdivision** as **Wai Oranga Rua** is a clear indication that people will be able to live well in the community where they feel welcome and have a sense of belonging.

Wai Oranga Rua means not only the two streams that bound the land but the wellbeing of the residents who choose to call it home. Paparoa Community Charitable Trust, the organisation behind Twin Streams, is extremely grateful to Hone Martin from Hukatere for understanding the Trust's long held intention of developing senior living opportunities in Paparoa and providing this translation.

In the Maori way of thinking, no two rivers are the same. Wai Oranga Rua encapsulates the same essence as that of 'Twin Streams'. The full translation in Te Reo is Ko nga Wai e rua, nga puna ote kaha, te ora te tuakiri, te wairua, te oranga tonutanga mo nga tangata e noho ana ki ãna tahaatika. Twin Streams is the source of strength, life, identity, spirit and sustenance for the people living on its banks.

OPEN DAY

Marketing the lots is in the hands of two local Real Estate agents, Ray White and First National. They are holding an Open Day on site, 113 Franklin Rd on Saturday 6 April from 10am to 2pm. The lots will be marked out and visitors will be able to see for themselves the boundaries, roading and layout. Prior to the Open Day further information can be obtained by contacting: Jill Wilson of First National 09 431 1016 or Keith Shadbolt of Ray White 09 431 8820.

Paparoa Community Charitable Trust, together with these agents look forward to welcoming many people along to the Open Day. Come and see the exciting possibilities for your future.

PCCT

He Waka Eke Noa

A canoe which we are all in
with no exception



New Zealand has come together over recent tragedy and Paparoa is committed to the essential need to live together in harmony.

Invitation to official opening

Paparoa Medical Society is thrilled to announce that the Paparoa Coast to Coast Medical Clinic and Paparoa Community Library are nearly ready. The OFFICIAL OPENING is on Saturday 4 May, 1pm, although we anticipate both services opening before then.

All are welcome to the official opening.

Contact Libby Jones 021 208 0093 or hames.jones@xtra.co.nz to confirm your attendance.



Come to our open
night
at your local
Volunteer Rural
Fire Brigade

Thursday 4 April
5-7pm

Paparoa
Maungaturoto
Tinopai

NORTHLAND NEEDS VOLUNTEERS

Paparooa Press PP

PUBLISHED MONTHLY BY

Progressive Paparooa Inc. (PPI),
for Paparooa, Pahi, Matakoho,
Whakapirau and Tinopai.

CIRCULATION 1,050

CONTACT US - SALLY TAYLOR, EDITOR

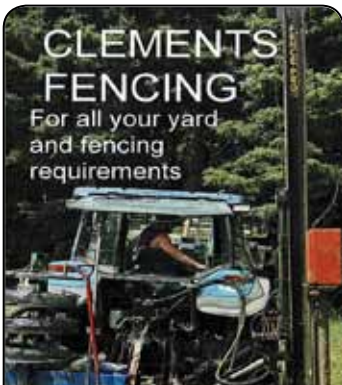
• press@paparooa.org.nz

• ph 09 431 7209

• PPI, PO Box 107, Paparooa 0543

• www.paparooa.org.nz

ADVERTISING

Rate Card available by email
Booking & Copy deadline:15th of monthPublication date 1st of month


CLEMENTS FENCING
For all your yard
and fencing
requirements

021 636 912
oclements@ubernet.co.nz

*Letters from The Old Post Office**"If I keep a green bough in my heart, the singing bird will come."* Chinese proverb

Dear, dear reader ...

As you can see I am attempting to adjust my attitude. Intolerance and rudeness shall no longer stain my lips. Even if I do not like you, my smile will be sweet and with no apparent choking in the attempt. So far I have smiled at the dog, the cat, the chickens and even briefly the man-in-the-shed. He appeared shortly afterwards to enquire if anything was wrong. No, no I cried, just practising peace, love and Buddha. Fearfully, he retreated.

This month my search for a topic was the visual expression of 'a thought stone dropping down a bottomless well'. No sound nor echo reached my straining ears. Until, and it is truly wonderful how inspiration can be delivered

from that unlikely source of wisdom, THE Shed. En passant, the word xenophobia caught my attention. And how could it not? Unaware as I am that the man-in-the-shed can speak Greek (although on reflection his words are often Greek to me).

Xenophobia (and it is possible they were referring to the fear of any strange beverage that is NOT Steinlager) is in fact the dislike of, or prejudice against people from other countries, people that are perceived to be foreign or strange. No doubt, the way the Maori first viewed the pakeha on arrival (and second, third and fourth). Allegedly, it takes a tenth of a second to form an impression of a stranger from their face, and longer exposures do not significantly alter those impressions.¹ That old chestnut about first

impressions counting is apparently all too true. However, is it not sad that having made these instantaneous judgements, we could not significantly alter our reactions upon a closer acquaintance and understanding of those people? A well known NZ writer, Owen Marshall writes of this very attitude in many of his short stories. "There's some ugly country in New Zealand, don't let them tell you it's not so ... but then ugly country breeds ugly people, I suppose."²

I am taking this to heart and preparing to alter my reactions to those people I find strange. Oddly, there has been a noticeable decline in the habits of the shed since I announced this decision (every cloud as they say).

Kia kaha, Deb

1. <https://www.psychologicalscience.org/observer/how-many-seconds-to-a-first-impression>

2. From Owen Marshall's selected stories 2008 "Prince Valiant"



gas.
Petrol Service Stations

Paparooa

Open 7 days
Mon-Sun 6am-10pm
09 431 6302

- Petrol, Diesel & Oil
- Fresha Valley milk 2L \$3.50
- Milk & bread combo \$5.50
- Great variety of snacks
- Pet food - cats/dogs
- Cop-Rice biscuits 20kg
- Great variety of Bait and all fishing requirements
- Top ups & prepay
- Frozen foods
- Firewood
- Hardware
- TRAILER HIRE



Manager: Navjot Singh
021 230 2801

- Enjoy -
MONDAY
Pizza Special
Just **\$15**
FROM 3PM EVERY MONDAY
• **PAPAROOA HOTEL** •
www.paparooahotel.nz (09) 431 7359





Paparoa Lions celebrate 40 years of community service

Just a week after hosting the Pioneer Luncheon, Paparoa Lions hosted another lunch, this time for 90 people, to celebrate 40 years of Lions service in the Paparoa community. Twenty-three current Lions and their partners gathered alongside other guests including representatives from other Lions clubs, Rotary and Zonta and Lions district cabinet members.

Past Lions present included the first President Ian Pasley, four former charter members (Clyde Roach, Bill Stewart, David Laird and Bruce Leaf) and widows of previous charter members, Ella Hames and Doreen Skelton. Ian Pasley and Kerry Bonham (the only current charter member of the club) shared the cutting of the anniversary cake made by Lion Helen Poot.

MC Ken Chambers outlined club highlights of the last 40 years with some humorous

anecdotes. It was a time to reflect on the many projects the Lions have been involved in and how they continue to contribute to individuals and other community groups throughout the area.

Three members of the club were acknowledged for their service within Lions and the wider community and were presented Lloyd Morgan Lions

Clubs Charitable Trust NZ awards. Alistair Banks received Life Membership of the Trust while Stephen Findlay and Pete Hames received Honoured Recognition.

In addition, Kerry Bonham received recognition for 40 years of Lions service, and Bryan Walker for 37 years.

Paparoa Lions welcome new members and are looking forward to the next 40 years serving the community.

Contact current President Bruce Lydiard 431 6975



From left: Graham Donald, Peter Burch (Auckland), Alistair Banks (with Award), Bruce Lydiard (President)



Maungaturoto and Districts Rotary Rotary news and events

Firstly, we acknowledge the passing of Honorary Rotarian and former stalwart of this community, Mrs Beth Dalebrook. Involved in, not only Rotary, she impacted in many different areas. Thank you Beth for your service.

At our recent fundraising event for the Dementia Unit The McSweeney Brothers treated us to three hours of magical entertainment with an opportunity for dancing and to socialise over a fantastic supper. Marian's magic fiddle charmed us all. We're grateful to those who helped the evening go smoothly; especially Kenny and Terri on the bar and Marge Paton who operated the eftpos for us.

In January we sponsored Quintin Brown, Head boy at Otamatea HS to go to the 21-day Outward Bound course at Anakiwa. Quintin gained much from the experience, saying it has impacted hugely on his attitude to life. A phrase that really resonated with him was

"being vulnerable and falling forward", no doubt a skill many could benefit from.

Later this year we plan for another community day for residents, especially newcomers, to get to know what's on offer and from where to get information in the community. If your group would like to participate please call Eileen 021 142 0357.

There are still bags of calf litter, (our Rotary fundraiser) for sale at Maungaturoto Four Square.

As Rotarians we enjoy many interesting guest speakers, working bees and times of fellowship. If you are interested in joining us, please get in touch with any Rotarian.

Eileen Parsons



NEW ART EXHIBITION opens April 1st

White Rock Gallery's new art exhibition of members' work opens on April 1st running for two months until June 30th. We're open 7 days a week, 10am to 4pm. Look for us next to the Matakahe Kauri Museum.

Our 2019 AGM was held in March. A new committee was elected and the Gallery will be in excellent hands for the coming year. While the past year has had its ups and downs, we're glad to be settled in our new gallery space at Matakahe. It's going to be an interesting year, with several community projects in the pipeline.

A well attended member 'get together' was held recently in the Pahi Hall and it was lovely to catch up with each other, away from gallery duties. A huge thank you to members and friends who do rostered duties to keep the gallery open seven days a week. It's a big commitment every month, but the gallery couldn't operate without everyone's co-operation.

On a sad note, our 'Friend' of the Gallery, Faith Murray, sadly passed away after a brave battle. Our thoughts are with Faith's family.

White Rock Gallery

SHOP & BREW

Moonshine & Curios
Home Brew Supplies
Great Gift Ideas
Layby Available




Wed-Fri 10am-4pm
Sat 9am-3pm
Sun 10am-2pm
1994 Paparoa Valley Rd
09 431 6547

BATTENSBY Bros.

CONTRACTING LTD

- Undersowing/stitching • Spreading • Silage & Hay
- Fertiliser • Firewood (WINZ approved)




Glenn 021 983 734 Ross 021 983 594
Ph: 09 431 6186 Email: battensbybrothers@xtra.co.nz

Sue's Cares

**Carer available
now in Paparooa
area**

**Experienced in
resthome, dementia,
hospital and
palliative care**
Long or short term engagements

**Sue Peterson
021 108 2191**

Sound Energy Massage

*Relax Body, Calm Mind, Awaken Spirit
Sound Healing with Tibetan Singing Bowls*

Introductory Special

\$20 for 30 min
\$50 for 60 min

More info & bookings contact

Carrie: 0210 576 184

Carrie@SelfNurture.org

fb.me/soundenergymassage

Location: **Paparooa**

EXP 30 Apr 2019

Libby's Councillor corner

Councils provide assistance through a variety of means to communities and community groups. Over the next few months Kaipara District Council will be asking for applications for community grants and nominations for the Council Citizen Awards.

CITIZEN AWARDS

Nominations open on the 1st May and close 31st May. These are for citizens of the Kaipara district who make a significant contribution to our communities, often in a number of different ways - people who go above and beyond to make our communities thrive. If you know of someone worthy of this award then contact Council (or go to the website) for a nomination form. I suggest you get support information or letters from the groups they are involved in to help the committee make informed decisions when faced with the many worthy people who will be nominated.

COMMUNITY GRANTS

Two community grants coming up for applications are district-wide **Community Grants** and, for the Mangawhai area, the **MELA (Mangawhai Endowment Land Account) Grants**. This grant originated

in 1966 when Mangawhai Harbour Board was dissolved and the remaining assets invested to provide funding to benefit this specific area.

Both of these grants open on 1 June and close 1 July. If you are a not-for-profit community group or organisation and you meet the required criteria under the Community Assistance Policy, then get an application ready for when the funds open.

The second round of the **Rural Travel Fund** will be open in August to assist junior sports teams participate in local competitions. For help with putting an application

together Council community assistance staff are there to help and can point you in the direction of other funding or Council assistance if required.

Other assistance for community groups provided by KDC can be funds for a 'contract for service' to a community group to undertake services that benefit the community; a licence to occupy Council owned land; reduced fees on building or resource consents; or a rates rebate.

Libby Jones, 021 208 0093
Councillor KDC
Director Northland District
Health Board

Have your say on dogs

Kaipara District Council is proposing new rules for our dogs and is seeking community input to make sure it has got it right. These rules will be set through the Kaipara District Policy on Dogs and the Dog Management Bylaw.

The Policy on Dogs sets how Council manages dogs including areas where dogs must be kept on a leash and where dogs are not allowed. The Dog Management Bylaw is the legal instrument that gives effect to the approach set out in the Policy (bylaws are legally enforceable; policies are not). The Bylaw includes rules on picking up dog droppings in public places, wandering dogs and how many dogs you may keep in urban areas.

The **Draft** Policy and Management Bylaw, a consultation document and further information can be viewed on KDC's website. Your feedback on our proposed approach and particularly on where the rules apply is important. Make your submission online, by e-mail (bylaws@kaipara.govt.nz), deliver to any of Council's offices or post (Kaipara District Council, Private Bag 1001, Dargaville 0340).

The cut-off date is 4:30PM 10 April 2019. Please state if you would like to speak to your submission at a hearing.

Mark Schreurs, Policy Analyst, KDC

Paparooa Store

Proudly Supporting Paparooa

OPEN 7 DAYS

Monday-Saturday 7am-6pm

Sunday 9am-5pm



We stock a great selection of

CONFECTIONERY, ORGANIC, DELI, MEAT,
FRUIT, VEGES, FROZEN GOODS, BEER, WINE
and a wide range of grocery items at excellent prices

DVD's \$1 to \$8 per night

EFTPOS NZ HERALD POST CENTRE

Phone / Fax 431-7320

Cnr. Franklin Road and State Highway 12

Lisa's Beauty Retreat



Lisa's Beauty Retreat

176 Sterling Road
Paparooa

021455904 - 094316570

lisa_annes@yahoo.com

www.lisabeautytherapy.com

A letter from Coast to Coast Health Booking appointments for blood tests etc

Dear Community,

We are very excited by the growth in our area, enriching our community and bringing more skills and experience into the region. With these changes also has to come adaptation to meet these growing needs.

The practice in Maungaturoto has implemented some changes to meet the increased demand on our service. One of the changes relates to booking for appointments with the nurses to have bloods and other procedures done.

Previously we had a drop-in service, but as many of you may have found out, the drop-in system often led to bottle necking with lots of people turning up at the same time and having long waits. It is a priority to triage people feeling unwell. The nurses will see you for dressings and bloods after these cases are dealt with, which could mean even longer and frustrating waits. With the new appointment booking we aim to see patients more proficiently with reduced waiting times. As a medical centre this is never a guarantee as we still need to deal with urgent cases and sick people, but booked appointments will be addressed in order and as efficiently as possible. There are limitations to the number of patients that can safely be seen each morning/day but we know our nurses and blood taking staff will always endeavour to be as flexible as possible in a patient centred fashion.

Our bloods are collected at lunchtime by the only courier collection we get daily, meaning we can only do blood taking in the mornings. These samples are processed and need to arrive at the lab within working hours, before 1700. Our Wellsford centre does do bloods until 1630 daily. If you prefer to have your bloods taken elsewhere, as long as you have your blood form from your GP, we will receive the results, no matter which lab you use.

This service remains under review at management level. We welcome feedback and suggestions from our community. In the future, with your feedback taken into account things may change again but we will keep you informed of any such changes. There have been discussions around a dedicated allocation of days, (eg Tuesdays and Thursdays) for bloods to focus staffing for this service, and whether to introduce a fee for taking blood samples, as it is not a funded service but something Coast to Coast Healthcare have striven to provide for its community at this time.

We appreciate your patience with any changes in our process.

Dr Aaron Donald
Coast to Coast Health

Bridges named and more...

A huge thank you to everyone who came to walk Te Piringa Tahī on 9 March - rain, wind and sun! More than 700 people came along to check on progress and enjoy the sizzle manned by the Paparoa Lions. It was fantastic to share the day with you.



Both bridges have now been named and blessed by Te Uri o Hau.

No 1 **Te Ao Marama Hou**

Moving from the past into the future

No 2 is **Te Piringa Tahī**

Coming together as one

All traffic is now travelling on a 1.8km stretch of new alignment; thank you for your patience. Until now, most of our work has been 'offline', meaning separated from the existing road. Now we're working on a 'live' road and doing it in the safest way possible which may cause delays. To complete more of

the earthworks there's a 150m diversion allowing traffic to flow in both directions through the eastern tie-in where it joins the existing SH12. Weather depending, we're on track to have the full alignment open to all traffic by Easter!

By late April street lights will be installed on the three intersections of the alignment. The final section of road to be built will be the last 200m of road at the eastern tie that will need to be stabilised and sealed with a stop/go operation.

The Matakoho Bridges Team
FultonHogan Ltd

SKELTON'S

NEW SEASON'S Vassalli and Vivid in store now



Introducing ... a new
Possum Knitting Yarn
Beautiful and Light ...
Would be great for overseas visitors!

Skelton's Paparoa Drapery

Mon-Fri 8.30am to 5pm Sat 9am to noon

Ph 431 7306

LANCE KEAY CONTRACTING LTD

- Effluent Pond Cleaning
- Round Bale Hay & Silage
- Ripping & Discing
- Power Harrow & Air Seeder
- Under Sowing
- Gerse/Scrub Mulching
- Conventional Baling

Ph: 09 431 6308

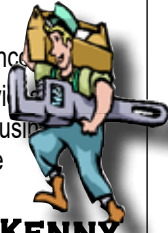
E: lancekeaycontracting@farmside.co.nz

PH: 021 383 908

PLUMBER

Kaiwaka to Ruawai

- 30 years' experience
- All plumbing services including new houses and maintenance



ANDREW KENNY
ph 027 642 8320

Painter & Decorator

Tradesmans quality work guaranteed



- Interior
- Exterior
- Spray finishes
- Roofs
- Waterblasting

For your free quote call Mike 021 529 025

KMU SURVEYS LTD

MAUNGATUROTO

Ken Urquhart

Licensed
Cadastral
Surveyor



09 431 8705
021 161 2344

kenurquhart@xtra.co.nz

What's happening at The Kauri Museum

NEW EXHIBITION - 'THE PERFECT ACCESSORY'

The textiles volunteers have been working for weeks, sorting through the collection and choosing what objects will go on display. Much time and effort has also gone into making 'packers' to hold the shoes and protect them while they are on show. The oldest pair dates from the 18th century and are made of fine wool, bound in satin. They are so delicate, it makes you wonder how they survived until the 21st century!

SCHOOLS' MATARIKI ART

Planning for the schools' art exhibition that is now an annual tradition at Matariki is now complete. All primary schools in the old Otamatea area have been contacted and we look forward to receiving their artworks at the museum at the end of May. This year's theme is 'Kaimoana: oranga mai i te moana' meaning 'Shellfish: sustenance from the sea'. Last year's artworks were extremely good so we are very



General Manager, Dr Tracey Wedge and textiles volunteer, June Weber prepare a pair of 18th century shoes for the upcoming exhibition

excited about what we might see this year.

NATIONAL VISITOR SURVEY

Twelve senior students from Dargaville High School who are studying tourism have been talking with our visitors over three weeks as part of Museums Aotearoa's National Visitor Survey. The students have impressed with their presentation, manners and professional conduct during their time here. The school can be very proud of them and we thank them for helping us out.

WEBSITE HACKED

If you have looked at the museum's website recently and wondered why it does not seem to have much content, the answer is that it has been hacked and completely destroyed. What you see are the remains of the old website which have been restored to the museum's original domain name while we investigate the options for building a new site. A new one is about three months away but follow us on Facebook and Instagram for a glimpse of working life at The Kauri Museum.

FRIENDS OF MUSEUM AGM

Verity Baines of Pahi was elected President for the next three years. If you would like to join the Friends, or have any queries, please contact Verity 09 431 7160. Trustees and staff extend their thanks to the Friends of the Museum for the great work they do for The Kauri Museum every year.

SCHOOL HOLIDAY WORKSHOP

Clay modelling 17 April. Phone 431 7417 for details.

Community Connexions - Arty Farties Inc.

How do you get through to people who insist on leaving their rubbish at our doorstep? Is it because they can't read? If so, then please come and see us and we will help you. And is it because they think we can sort it and sell it?? No way.

We are starting the planting for winter food, thanks

to Rowie Panhuis for the donations of vegetable seedlings - lettuce, cabbages, leeks and more.

We could do with some help. Ruth and Hans are in Thailand, John's in Dunedin, Jan's trekking around the place - so if you have any time to spare please join us on Sunday mornings between 10 & 2pm.

Watch this space. We are waiting for information about the building of a new Fire Station. One of the pieces of land being considered is the old Paparoa bowling green. A&P own this land and we as an organisation lease this property.

Cheers from all the volunteers at Arty Farties.



Rhoda Morrison

Consistent Award Winning Salesperson

Achieving top results
for Clients!

09-431 6912

0274 800 691

rhoda@fnkaipara.co.nz

www.roperandjones.co.nz

firstnational REAL ESTATE Roper & Jones

Dargaville Realty Ltd, Licensed REAA 2008

Books @ Ruawai

5 Freyberg Rd, Ruawai

Selling secondhand books & music

Loads of good holiday reads

Lots of children's books

Fill a bag of books for \$5



Open: Monday, Tuesday 9-12 noon
Wednesday, Thursday, Friday 2-4pm
Saturday 10am-1pm
Ph 09 439 2044

027 200 5653 or 022 073 9752



Paparoa Community Library News

We are inching closer and closer each day thanks to our local tradesmen. For those of you who are wondering what we're getting closer to, here goes...

We're closer to being able to give our community their hearts' desire, a functioning library. For all those patient readers out there we can assure you we'll soon be giving the shelving company the go ahead to install our brand new shelving so our poor books, locked away in the dark for so long, will soon

see the light of day.

The response to our plea for new volunteers has been great for our little area and we, the committee, are so grateful.

We held a get-together for our existing and our new volunteers and looked at what we want for our library and where we should be heading to.

We also held a training

session to get a handle on the library computer system. So we are heading in the right direction. If you would like to join us or would like to know more about the library feel free to contact

Debbie Blythen,
431 6892



**PETE
THE
BUILDER**

your local friendly builder

Peter Clark
Ph: 0276 713 416
petethebuilderltd@gmail.com

582 Pahi Road, R D 1, Paparoa, 0571
A/hrs 09 431 6005

Global education for girls

This is a shortened version of the winning essay that Maggie Hames (year 12 student at Otamatea High School) wrote on 'A topic of international importance' when applying for an International Affairs Scholarship. Maggie will go to Canada on a five-month student exchange later this year.

The 8th of March was International Women's Day, a day to celebrate the lengths we've come towards equality and also for considering what's still left to do. One global goal is for all girls to have access to education.

Right now, 130 million school-aged girls throughout the world are not in school. Globally, only three in four girls will complete secondary school and in poorer countries, this proportion is closer to one in three.

Too many girls face obstacles and disadvantages which hold them back from being able to gain an education allowing them to progress in life. Whether those obstacles are child marriage, violence at school, lack of funding, child labour, civil war, or the plain fact that they are girls rather than boys, each of these children are unable to realise their potential and help their communities and countries out of poverty.

Quality education for girls results in more choices and hundreds of benefits. In these changing times, it is going to become increasingly hard to be able to find jobs without an education as routine jobs will become automated and no longer available. By educating women on their choices and therefore helping them make decisions that benefit their own futures, it is more likely for them to choose to have smaller and therefore healthier and more affordable families.

At the moment, many people

are working hard to get all 12-year-old girls a quality education wherever they live. Generation Unlimited, a global partnership with an aim to see this executed is an initiative by the United Nations. They are aiming to "ensure inclusive and equitable quality education and promote lifelong learning opportunities for all".

Solutions such as digital learning for rural children, mentorship programmes for young girls in South Africa, and clubs which support and empower girls throughout their education are being put into place to bring this to life. Countries need to realise the massive value of educating their children and therefore put more money into this sector as an investment in their futures.

For the future of the world we live in, every girl needs the opportunity to have 12 years of quality education so that they grow up with opportunities and freedom. Educated women empower others, including their children. They are able to support their families through secure jobs and most of all, they have choices. As comedian and influencer Lilly Singh said when she addressed the United Nations in September, "Whether or not girls get a quality education

"RIGHT NOW,
130 million girls
DREAM OF GOING
TO SCHOOL"



shouldn't be a lottery, it should be accessible to everyone".

Maggie Hames

AL's Upholstery

Alan Hilton



**Automotive
Furniture
Covers
Seats**

over 30yrs experience

021 0709101
100 Petley Rd, Paparoa



Earthworks - Roading - Drainage - Siteworks



2088 Paparoa Valley Road, Paparoa
0800 234 449 or 09 431 8339
W: www.huband.co.nz
E: admin@huband.co.nz

We stock:

- Topsoil
- Compost
- Mulch
- Draincoil
- PVC & fittings
- Bagged premix concrete
- Graded aggregate
- Landscaping products
- Alkathene & fittings
- Culvert pipes & joiners
- Timber & posts
- Fencing hardware
- Galvanised gates

And much more!

*Locally owned and
operated for over
30 years!*

*Come in and check
out our retail yard,
based in Paparoa*



Starbright Wellness

Massage
Reiki
Reflexology

Fri/Sat
bookings

Vicky Jennings

021 2484259

144 Franklin Rd, Paparooa

Atención! Mexican jalepinas in Mgto

The incomparable flavours of Mexican California have come to good ol' Maungaturoto, and in a most unusual way! Kimberley Gabbard, owner of Whole Life Organics, has teamed up with Alejandra Perez who came into the shop by chance enquiring for work late last year.

Given that they are both expat Californians, they quickly began reminiscing about their favourite Mexican foods and the lack thereof here in Aotearoa. Both agreed that all you can find in New Zealand is, at best, only very cheap and over-simplified versions of the incredibly diverse flavours offered on the streets of Southern California. They also agreed that they must let the locals try out the tantalizing tastes of authentic Mexican Street Food first. The cafe is now catching the attention of people from surrounding towns, Dargaville, Mangawhai, Waipu, and Whangarei. There are big plans to spread these delicious dishes far and wide.

To begin with, Whole Life Organics was just an old-fashioned, respectable and friendly New Zealand corner store selling health foods. All has changed. Their Mexican cuisine has become so popular with locals and passers-by that



that they can't keep up.

Kimberley, a Natural Food chef and the creator of Banini 'smoothies' in Hawaiian café chains, was also former owner and chef of The Heavenly Taste Catering in LA, California. She's obsessed with Mexican 'street food', the ubiquitous food-carts delivering ready-made, fresh Mexican food of time-honoured, home-spun recipes. In SoCal. Alejandra's mother (a native of Mexico City) taught her to cook authentic Mexican and Kimberley quickly recognised a perfect partnership opportunity.

The resulting combination of American California and Mexican food is something to be experienced- no amount of words can do it justice.

What does this mean for Whole Life Organics? Time for ch-ch-changes. The shop stock is being liquidated to make way for the delicioso healthy Mexican takeaways. There are great deals on all clothing, jewellery, stuff for baby, skin care, remedies, supplements, food, chattels etc.

So as the sun sets on Whole Life Organics, the sun rises on the Two Jalepinas. With quality authentic Mexican ingredients, we specialise in gluten-free, plant-based meals. Try our Cicken Crispy Tostada, Nacho Man Nachos or Jumping' Jack Spicy Taquitos! Be warned - forget all that you knew about Mexican food. This is a new paradigm for New Zealand!

For more info see their Facebook page:
fb.me/wholelifeorganics

R & D MACDONALD COMPUTERS

Call Ross with your computer problems & repairs
He'll even build a computer to your specifications



Ph 09 431 6221

email: ross@paradisebreeder.co.nz



Whole Life Organics Liquidating Sale

Great Deals On:
Food, Clothing, Jewellery, Skin Care,
Remedies, Homewares, Gifts, Chattels

Opening the way for
The Two Jalepinas
Healthy Delicioso
Mexican Takeaways

141 Hurndall Street, Maungaturoto
fb.me/wholelifeorganics
Open Mon - Sat: 10am - 5pm

Maungaturoto Rest Home

In residence are:

Elizabeth (Liz) Alsop of the Ecuyer family, Matakohē
June Weber of Ralph, Marac & Gary Weber families
Dora Cross.....formerly of Māreretu
Adrienne Angusformerly of Dargaville
Blanche Hubandof Maungaturoto
Eric Harrisof Rex & Yvonne Harris's family
David Spellers formerly of Ruawai
Agnes Philpott Josie Benetto's mother
Pauline Bellows Maree Cartwrights mother
Joy Millerof Maungaturoto
Pamela Stewart of Terry & Tony Littlejohn's family
Evelyn Annis of Judith Radd and
Christine Buckingham's families

CABINS FOR RENT

2.4 x 3.6m \$65 P/W
2.4 x 4.2m \$75 P/W
plus delivery & bond

INCLUDES POWER LEAD,
CARPET, AND CURTAINS
FULLY INSULATED

Ph Keith 021 2394251

AWDT's Vision



Women are vital partners in world-leading New Zealand primary industries.

AWDT's purpose - to equip and support women to generate economic, social and environmental progress in the primary sector and rural communities.

Agri Womens' Development Trust

This year AWDT has held a series of workshops in the Kaipara. Established in 2010 the organisation is all about helping rural women to develop the skills they may need in order to contribute more on their own farms.

Before then 50% of people in New Zealand's primary sector - women - had little involvement in decision-making, from farms to boardrooms. In 2009, after three years of research, Lindy Nelson, a farming woman herself, turned that problem into an opportunity.

Many women have come to farming from very different careers and need help to gain the relevant skills. AWDT tutors believe that the success of the Trust is largely due to their unique approach, the combination of technical advice and information and the focus on communication.

The Trust operates throughout NZ and just this year has seen about 40 courses set in train. The courses include: understanding your farming business (sheep and beef) production, feed budgeting, and cash budgeting. The recent course held in Maungaturoto included an accountant to help the women go through their farm numbers and their set of annual accounts. Another recent course focus was communication. Essentially

how to reframe conversations, how to make change in your business. Course tutors believe that by changing and inspiring the women on the course they will be empowered to make those changes for the health of both business owners and their future.

There is also a course for couples, with again the emphasis on communication, business partnership, planning and analysing possible threats. Part of their message is that change is inevitable, therefore how does one manage that change within a business.

This year there is a course designed specifically for rural Maori women, Wahine Maia, wahine whenua that is being run in Gisborne, Kaikohe, Christchurch, Wellington and Opotiki. Aimed at helping participants better understand how their whānau, trust or incorporation farm is run, and funded by the Red Meat Profit Partnership (RMPP), the four-month programme consists of three high-quality, full-day workshops delivered by industry experts. 

Twilight Fun Walk and Run Saturday 6 April 4pm

Come and join this community event starting at Paparoa Sports Pavilion on Saturday 6 April at 4pm. This is Paparoa Sport and Recreation's second annual such event which has two options - 4.8km or 4km length courses to suit different levels.

Adults \$10
Juniors (under 18yrs) \$5
Family (up to 5 members) \$15

There will be lots of spot prizes.
Event enquiries Libby 021 208 0093



THE KAURI MUSEUM

Real New Zealand Heritage

What's on at your Museum

Exhibitions:

- * Textiles 'The Perfect Accessory'
- * Anzac Day display opens 19 April
- * Heritage Rose Collection



For residents of the old Otamatea District: Annual passes available

5 Church Road, Matakoho, Northland. p: 09 431 7417 w: www.kaurimuseum.com



**NORTHLAND'S
BIGGEST
BED OUTLET STORE**

**1/2 PRICE BEDS
SECONDS & SAMPLES
SLAT BEDS
PILLOWS
TOPPERS
ADJUSTABLE BEDS
BEDROOM FURNITURE**



**STOP BY AT THE WELL CAFÉ
OPPOSITE US—WHEN YOU COME**

09 439 2243

18 FREYBERG ROAD, RUAWAI

FENCING SPECIALISTS

CALL CHRIS HICKEY ON 027 561 1719 email: fencingspecialists.nz@gmail.com



ALL ASPECTS OF FARM & LIFESTYLE BLOCK FENCING & MAINTENANCE INCLUDING:

- Post & Batten • Entrances
- Post & Rail • Retaining Walls
- Stock Yards • Riparian Lots
- Netting • Subdivision



WE NEED VOLUNTEERS
ME TONO MAI KOE HEI KAITUAO

COME TO OUR OPEN NIGHT 5-7pm, Thursday 4 April
Paparoa Volunteer Rural Fire Brigade
10 Depot Road - Friends and whanau welcome

"I joined to help and support my community in times of need."

Cohan Yorke
Linesman, Volunteer Firefighter

WHAKARATONGA IWI SERVING OUR PEOPLE WWW.FIREANDEMERGENCY.NZ

Kaimanawas need owners

The 2019 Annual Kaimanawa Horses Muster is fast approaching and applications for homes are urgently required for 55 horses out of the 70 that will be mustered at end of April/early May.

Is anyone out there interested in owning a Kaimanawa?

We have had the pleasure of owning one of them. She came to us at the start of this year, a pony mustered up in 2016.

We recommend the journey.

Our wee mare is a delight to have around and she fitted in easily with our other three horses. She is different to other domesticated horses and as trust grew she developed strong bonds with us.

Enrich your lives and 'save a kaimanawa'. The pleasure and joy they give and their cheeky personality and honest gentle demeanour is amazing.



This autumn 70 horses will be rounded up by the Department of Conservation in the muster from the Kaimanawa Ranges in Waiouru. So far there have only been about 20 applications from prospective owners. Those not homed will go to slaughter.

You can find everything you need to know about the 2019 Muster on the website, including a description of the requirements and process for adopting a mustered horse and what goes on during and after a muster.

kaimanawaheritagehorses.org/2019-muster
or Email: muster@kaimanawaheritagehorses.org
Dot Wreaks, 027 333 0261

Otamatea Repertory Theatre Inc
Proudly presents

Disney
BEAUTY AND THE BEAST
JR

Music by Alan Menken
Lyrics by Howard Ashman and Tim Rice
Book by Linda Woolverton

Show Dates
April 27 @ 2pm & 6pm
April 28 @ 2pm & 6pm
May 3 @ 7.30pm
May 4 @ 2pm & 6pm
May 5 @ 2pm

Tickets online at www.ort.org.nz
Or at Tony's Lotto Shop, Maungaturoto
Adults \$28 Students \$15

Disney's Beauty and the Beast JR is presented through special arrangement with and all authorized materials are supplied by Mwan Theatre International, 425 West 54th Street, New York, NY 10019

Beauty & The Beast JR

Our young and talented cast members have been practising hard learning lines, songs and perfecting moves in preparation for the opening of Beauty and The Beast JR on April 27th.

The costume department is working overtime to create fantasy costumes for this visual extravaganza. We are fortunate to have Lisa



DancEnergy dancers with tutor Lisa Johnson

Johnson of DancEnergy involved, training a small troupe of dancers to the wolves in two of the scenes. A huge number of people pull together to create a great show!

Beauty and the Beast is the story of Belle, an adventurous young girl, and the Beast, her hideous captor (a young prince trapped under a spell). A spell that the Beast must learn how to break before time runs out. The story of a beautiful friendship unfolds with the help of the castle's enchanted staff, including a teapot, a candelabra and a clock.

There will be eight shows over two weekends 27/28 April and 4/5 May. Tickets are available now - either online at ort.org.nz or at Tony's Lotto Shop, Maungaturoto. A 'Family Special' is available on the first show only, 27th April, 2pm (Purchase four tickets, one must be an adult, to receive a 20% discount.) This deal is not available online - either visit Tony's, or contact Maura Flower (022 354 2670) to secure discounted tickets.

Stewart Island tramp ... North West Circuit

From Invercargill airport, where we met up with our fellow expeditioners Robyn Bruce and Stella Clyde, we flew in an 8-seater plane across to the west coast of Stewart Island to be dropped off at Mason's Bay beach (low tide dependent) for the start of our eight-day and seven-night tramp. Despite a wet first day (predictable) the weather was fine and mild (unbelievable).

Over the next days we tramped sometimes solid 12-hour days, covering as little as 15kms. The North West Circuit track is challenging and is a real mix of terrain, often requiring much concentration as to where one's next foot was going. It included walking through muddy patches up to our thighs, holding onto tree roots while clambering backwards down steep paths, streams to be crossed and much climbing up and over ridges. There were also stretches of beach walking, some sandy, and others covered in boulders (one memorable beach was named 'Lucky Beach').

The native bush of ancient stands of majestic rimu, and the bird life (kiwi, bellbirds, tui, saddlebacks, weka to name a few) were amazing. We were fortunate to see five South Island kiwi (larger than the North Island kiwi) which are



Welcome sight at end of day - one of the DOC tramping huts en route



Jan passes one of the more visible track markers

very territorial. A couple of them were fending each other off while feeding near the track in broad daylight. Incredible considering they are regarded as nocturnal birds.

The sight of the well equipped and comfortable DOC huts (with 12-16 bunks) were always welcome at the end of such long days to recharge for the next day's adventure. At Yankee Hut (renowned for spotting kiwi) we chuckled reading the wall plaque, 'Mud is to the shoe as sandfly to the arm, embrace these two and the kiwi will show you its charm'.

As the days went by our food supply dwindled, thankfully making our packs lighter, but by the last day or so we survived on just crackers and cheese! A huge chained archway signified the completion of the track. By this time my boot soles were only held together with shoe laces. On the walk back along the road to Oban, a kind local driving in his ute stopped and offered us a ride (something the locals do down there for trampers). Whoopee! In no time we were on board, packs and all and we were back in hotel luxury.

Our last day was spent on a local tour. Stewart Island's population is just 380, there are around 2,000 tourists per annum, the primary school roll is just 31 with two teachers and teacher aide.



The view from above - flying in to Stewart Island

The music teacher is based in Ashburton with lessons taught via internet skype. High School students (13-18 year olds) attend boarding school at Invercargill. Government funding provides free education and transport to and from the Island.

Two District Nurses service the Island 24/7. Stewart Island has just 27kms of road, the longest stretch being only 5kms. With rain falling 200 days a year there is no shortage of water! We were so lucky to strike only one wet day while there.

Power supply is by diesel generator making it three times more expensive than the rest of NZ. A wind turbine trial failed as it collapsed in the excessive winds. Fishing company Sandfords farm salmon and have commercial fishing boats catching crayfish and blue cod in pots, much of which is exported to China.

The locals are very patriotic and just love their Island. A metal plate embedded in the concrete reads "I must go over to New Zealand one day", signed a Stewart Islander.

What an interesting adventure and visit to NZ's 3rd largest island.

Jan Robertson



Bruce on a bridge swung from a giant rimu tree

PAPAROA FARMER'S MARKET

EVERY SATURDAY VILLAGE GREEN 9-12
 EFPOS AVAILABLE
 STALLHOLDERS CONTACT
 RUTH 021 433 969
 GOODLIFESOAP@GMAIL.COM

ADAM STEVENS

BUILDER

Licensed
Building Practitioner

For new builds,
alterations and roofing

021 741 363 a/h 09 431 6245

SHEPPARD ELECTRICAL LTD

ELECTRICAL INSTALLATION
AND MAINTENANCE

Bill Sheppard
Electrician



021 975 618

OR
a/h 09 431 7196

LIFESTYLE AUTOS

Roger Price

Full Mechanical
Services

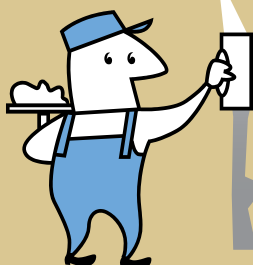
Warrants
of Fitness



Paparooa Valley Road - next door to g.a.s.
Phone 431 6620

TINOPAI PLASTERERS

WE GUARANTEE THE HIGHEST QUALITY FINISH



35 Years experience in...

- GIB Stopping
- Fibrous Plastering

for FREE quote, call us now!
Trevor 021 0300 073

OCS April news & information

SENIORS' LUNCHEON

The first Seniors' Luncheon for the year took place in March - a month later than usual due to Waitangi Day. There was a great turnout and going by the reports coming in, a good time was had by all with lots of catching up going on around the tables. Our sincere thanks to all who contributed to this successful day - without all of you our senior members of the community would be missing out on a treat. As mentioned previously we are in the process of changing caterers so while new faces appear in the kitchen, we aim to keep on providing tasty meals for your enjoyment. Tell your friends and neighbours about this event if you think they might not know about it.

FUN AND GAMES

After our usual monthly **Chocolate Bingo** last month we began our new **Fun and Games** morning which included cards, alphabet dice and scrabble. We thought it would be fun to have a variety

of activities including board games, cards, craft, play-reading, writing, quizzes.

Would you like to organise these mornings? Please let us know if you would like to help run this for a couple of hours, possibly twice a month. Phone Pauline at the Community House on 09 431 9080.

Chocolate Bingo is held on the third Wednesday of each month at the Footprints Room in the Anglican Church, Hurndall Street. Fun and Games will likely be at the same venue. Another reason to talk to your friends and neighbours, tell them all about Fun and Games!

We look forward to your thoughts and ideas.



VAN DRIVER NEEDED

Is there anyone interested in a volunteer role, driving our community mini-bus on shopping trips. This would be on the fourth Wednesday of each month, and possibly other days as required. All applicants will be subject to a vetting process. For more information, please call us.

Remember - your Community House is open five days a week, from 9am to 4pm, We are here to help with counselling, parenting, financial mentoring, senior support, addiction support, social work, family support- call in or phone us.

The Team at OCS, 431 9080
155 Hurndall St, Maungaturoto

Kaipara Hunting & Fishing

ANNUAL PARI TARGET PRACTICE SHOOT

The target shoot on February 10th was a great turnout of 28 shooters, with Paul Dunnett again making top score, shooting 72 targets out of 80. Brent Lawrance made 67 and Alex Squires 64.

PARI SHOOTING WEEKEND

The weigh-in on Sunday 24th February saw some great prizes won and results were:

Heaviest Drake:

Graham Robertson (1.88kg)
Tony Smith (1.86kg),
Dylan Thompson (1.8kg)

Heaviest Hen:

Graham Robertson (1.38kg)
Tony Smith (1.36kg)
Dave Byles, Hayden Smith,
Dylan Thompson (all 1.34kg)

Heaviest Pair:

Graham Robertson (3.26kg)
Tony Smith (3.22kg)

UP-COMING EVENT: ANNUAL DUCK HUNTERS SHOOT

Sunday 14th April at Hames Road, Maungaturoto, starting at 10am, \$50 p/p, juniors free (16 and under).

With great prizes to be won (in all sections plus a major draw prize valued at \$700 for all attendees) it's a chance to get in some practice before 'opening weekend'.

FISHING COMPETITION

Game fishing is in full swing with Jenny Mclean landing the first marlin of the season



Pari duck weigh-in time

caught off the west coast (with skipper Andy Thompson). A great effort and a fantastic result.

Current ladder results:

Seniors:

Snapper - Annette Pull
Kingfish - Nothing weighed
Kahawai - Annette Pull
Gamefish - Jenny Mclean (90.4kg striped marlin)

Juniors:

Snapper - Max Tunnicliffe
Kingfish - Tara Wrathall
Kahawai - Nothing weighed
Gamefish - Bronson Wrathall (8.47kg albacore tuna)

New members welcome: call Andy Thompson 021 129 4378
awthompson@outlook.co.nz

President Cameron Shanks
09 431 6229
Secretary Annette Pull
027 286 2329

Thinking about ... our health services

The temporary closure of Coast to Coast's Paparoa clinic has had many locals thinking and talking about the provision of health services in this area. We live on the edge, the grey area. It was ever thus - from Plunket to Palliative Care.

Whether you support the Dargaville Medical Practice with morning clinics at Ruawai, or Coast to Coast in Maungaturoto is a matter of personal choice, perhaps influenced by geography. The system seems to work and as a medical ignoramus I have neither the desire nor the expertise to make any criticism of performance. We are not totally in limbo.

However there are problems and we become vulnerable if we are not registered with a local practice or unwise enough to have a medical emergency or an accident out of hours. An unregistered patient may be fitted in if presenting at Maungaturoto, or may be referred to Whangarei. Dargaville has a policy that any person presenting will be seen, but they may have a long wait

and, of course, the Ruawai clinic is not attended in the afternoon.

After hours there are doctors on call in Wellsford and Dargaville. However, bear in mind that you could be a long way towards Whangarei in the time it takes to drive to Wellsford and you could be sent there anyway, dependent on your problem.

Call an ambulance? A word to the wise. If you call 111 ask how long the ambulance will be. There are many instances of people waiting over an hour for an ambulance to come from Whangarei, Ruakaka or Mangawhai.

This is not to criticise the local St Johns. If their ambulance is already deployed, or there is no driver, they cannot help. However, if you know how long

the wait will be you can assess the situation. How urgent is the need for care? Would the patient be comfortable in a car? Have you a car, a driver and a person to help? All that. How long does it take to drive to Dargaville or Whangarei?

We must become proactive. Make official complaints if you think you have not received quality service. Explore the advantages of requesting the public health nurse for dressings and so on, thus escaping the need to travel and to pay fees including fees supplemental to ACC payments.

Much of St Johns operational practice is controlled at the National level, but we can support our local volunteers. The Branches have been informed that changes are about to be made which may help our situation. Watch this space.

Meanwhile, take care, RS

HANDYMAN



BUILDING
-
STOPPING
-
PAINTING
-
KITCHENS

ph Cam 021 77 77 92

Keith the TV Guy

Freeview digital TV



20 TV and 9 Radio/Music channels are currently being transmitted.

Satellite dishes, decoders, cable etc., supplied and installed.

09 431 7143
or 021 239 4251

Autumn gardening

Daylight saving switch is a sign autumn is well and truly here. With it comes harvesting of various later-maturing produce in the fruit and vege gardens. This includes pumpkins which require a long growing season of 4-6 months. In the North's relatively frost free climate they're ready to be picked once they've coloured up, sound hollow when the shell is knocked, the skin is hard and the leaves die away. Harvest pumpkins from the vine with a sharp knife, leaving the stem attached, and store in a cool, dark, dry place.

The long hot dry summer has contributed to bumper and good flavoured crops of figs and grapes. Amazingly the white eyes and mynas are yet to spot and feed on these delicacies.

Autumn is also the best time to plant and feed spring flowering bulbs although here in the North it may be better to plant them deeper and later in the season when the soil temperatures have cooled. Some bulbs e.g. anemones and renunculus require chilling in a paper bag (away from fruit and veges which produce ethylene gas, causing bulb damage) for 5-6 weeks in the fridge to be then soaked in fresh water 6-7 hours before planting.

Bulbs can be planted in pots, raised beds or existing garden beds with well drained soil mixed with organic matter such as sheep pellets, compost or a purchased pre-packaged bulb food. Sand can be mixed into heavier soils. Bulbs should be planted roughly twice the diameter of the bulb, watered well and mulched to insulate from temperature fluctuations. Sprinkle slug bait when leaves start appearing and keep them weeded.

Some winter producing veges such as broad beans, silverbeet and spinach, broccoli, cauliflower and cabbage, to name a few, can be planted now.

Jan Robertson

Unichem
Orrs Pharmacy Maungaturoto

**For all your health and beauty needs
at competitive city prices and with
friendly country service -
call in and talk with **Simer,
Karen, Gayle, & Crystal**
- if we haven't got it,
we will do our best to get it!**

*Enjoy the benefits of shopping
locally and save petrol -
we are worth the visit!*

*Don't forget -
if you are unable to collect
your prescriptions from the
Pharmacy we can deliver daily to
Paparoa, Matakohu and Tinopai -
confidentiality assured.*

144 Hurdall Street, Maungaturoto
Phone (09) 431 8045
Fax (09) 431 8808
maungaturoto@orrs.co.nz
Open Monday to Friday 9am - 5pm

**SHOPPING THAT'S TWICE
AS REWARDING.**

Marching March madness!

Marching for sport in New Zealand began in the 1930s and developed to help keep young women fit and healthy during The Depression. In the 1940s it became more organised so that teams could compete against each other. Leisure Marching really took off again in the 1990s when the word got out and many women who had marched in their youth stepped up to get into it again.

Coming from the UK, I had never heard of leisure marching until October last year after I had moved to Paparooa. A lady at one of the local exercise classes invited me to join her team. "You might like it", she said, "and we'd love to have you". I was also intrigued to hear that she "went away" with her marching ladies. With no clue what it was about or what it would be like, I decided check it out.

On my arrival, I was welcomed with big smiles and warm hugs and it's been like that ever since. After joining the team in November I've been involved in two Santa Parades and this March have taken part in their annual gathering in Hamilton, the 2019 Leisure Marching Nationals. There were 80 teams from all over NZ who

participated, a total of about 1000 women.

Getting up and executing our marching plan in front of so many was daunting as you worry about making a mistake and letting the team down. But actually every single woman who got out and did their thing no matter how many mistakes they made was a winner - just by being there, by performing and by cheering on the next team! I saw women in slings, and crutches who were taking part. The colours of the uniforms, the creative displays and the upbeat music that got us dancing in the aisles made the whole event really engaging, entertaining and fun.

You may think that this is all



Kaipara Marching Team, Left to Right: Cecelia Chapman, Janice Booth, Kathy Barron, Rachelle Davies (Leader), Rose Plunkett, Carrie Adlington, Corinna Thorburn, Jane Baird, Theresa Ramirez, Connie Walker (Manager), Lyn Hutchings (Coach). (Absent: Barbara Lee)

about the older woman. It's a fact that many women are retired, but for me, in my 30s, it's all about heart. I love the ladies in my team, I love the care they put into what they do. I love the dedication of Lyn Hutchings, our coach, who drives from Whangarei twice a week to instruct us. I love the camaraderie, the fun, the laughter and the friendships. And, besides the fun and friendship of being part of the team, you improve memory, gain fitness and improve your co-ordination.

I'm grateful that due to my team's past fundraising efforts I didn't have to worry about buying my uniform or funding

myself to go to Hamilton. Without such fundraising I wouldn't have been able to go. So I'm giving back. I'm raising money from my massages to help the Kaipara Marchers go to events around NZ throughout 2019 and the Christchurch Nationals in 2020.

FUNDRAISING MESSAGES

Come and enjoy a 10 minute shoulder sound energy massage with the Tibetan Singing Bowls for \$10 at local markets. Sound healing helps to effortlessly relax your body, calm the mind and awaken your spirit.

Paparooa Farmers Market

Sat 6th April 9-12 and
Sat 20th April 9-12

Mangawhai Village Hall Market (on the stage)

Sat 13th April 9-1pm and
Sat 27th April 9-1pm

For more info call
Carrie 021 0576 184.

All proceeds go to Kaipara Marchers.

For more info about Leisure Marching or to join Kaipara Marchers' Leisure Marching Team please contact our coach Lyn Hutchings 022 0708 674

Carrie Adlington



Carrie giving Sound Energy Massage with Tibetan Singing Bowl

YOUR TYRE SPECIALIST

Providing 60 years of service in the heart of Kaipara.

- Tyres
- Brakes
- Wheel Balancing
- WOF
- Suspension
- Servicing
- Alignment
- Batteries

Garnetts Tyre Service

📍 2 Gorge Rd, Maungaturoto

☎ 09 431 8255

BRIDGESTONE TYRE CENTRE



4T-DIGGER – BOBCAT – TIP TRUCK

Property Maintenance – Driveways – Building Sites
Stump & Tree Removal – Hole Boring – Chain Trencher
Calf Shed and Stockyard Cleaning

KAIPARA – WHANGAREI – RODNEY

Phone Matt: 021 199 6677

Email: mprabrownecontractors@gmail.com

Beauty clinic give-away

It's not every day you get the opportunity to acquire a fully operational, award-winning business for free but this is exactly what is on offer in Paparoa right now.

Skin Image owner and operator Nina Quan is consolidating her beauty business in Waipu where she now lives, and is offering her award winning Paparoa business as a going concern – for nothing, provided the new owner buys the building in which the clinic is housed.

The commercially zoned building on the main street of the little township is set up as a beauty clinic with two consulting rooms, reception area, storage/office room, toilet, kitchenette, laundry and a large covered deck at the back. Each consulting room is fully set up for beauty and massage treatments and has a sink, bench unit and a reverse-cycle air conditioning unit.

The give-away business incorporates all the clinic equipment (trolleys, hot towel cabbies, wax pots, maggi lamps, steamer, skin scanner

etc etc), washing machine, furniture, beds, linen and current stock, so a new owner can just walk in and take over.

The deal may include goodwill, as some clients will probably want to continue to get their treatments locally. "It is a once in a life time opportunity

for someone who has always dreamed of having their own clinic," Nina says. The new owner will be "walking into an existing, fully operational business with a great foundation and reputation". The clinic was a finalist in the NZ Association of Registered Beauty Professionals best new clinic category for 2017/18.

The naming rights of the existing business, 'Skin Image' is not included in the gift



SKIN IMAGE

PAPAROA - WAIPU

age younger with healthy skin

- ✓ Collagen Induction Therapy
- ✓ LED Light Therapy
- ✓ Eyebrow Feathering
- ✓ Skin / Product analysis
- ✓ Eyeworks & Waxing

(09) 431 6483 or
022 394 1184

The Glass Guy



Phone Colin
09 431 6595

"but here is a space already set up for someone to put their stamp on it" says Nina.

If the new owner does not want to continue with the business they can choose to sell the equipment and furnishings, or they can lease out the business or run another business. "The set-up and location lends itself to many small business opportunities."

Please contact Nina direct at Skin Image if you would like more info. on 022 394 1184.

How embarrassing!

It's the last Saturday in January and the sun is shining. The annual Paparoa Agricultural and Pastoral Show is on. A big day in a small town.



Arriving early we park in the outer paddock and wander towards Paparoa Hall to see the inside exhibits. Lovely baking - scones, chocolate cake, fruit cake, lamingtons. They look good but are not for us to eat. The tables are heaped with local produce - all lovingly displayed - so hard for judges to make their decision.

Outside we see sheep shearing demonstrations and go past penned off areas in which large cattle beasts look on at us with bored expressions on their docile faces. Sights and smells are so very much part of the show.

Now to the horse arena. Beautifully groomed horses and immaculately turned out riders are competing. The jumps are so high and some of the riders very young, but they are all competent and there are few mishaps.

We stroll past an area where the miniature horses are tied up awaiting their turn in the arena. The little horses look so very cute and stand quietly. I just can't resist the temptation to pat them. First the lovely little black miniature horse. His rump just gleams in the sunshine and I reach out my hand and stroke the black moist hind quarter. Next we move on to see a really lovely little pure white miniature horse, also standing quietly awaiting its turn. Once more I reach out and touch the gleaming white rump.

HORRORS!! On the beautiful pure white rump there is now a large black hand print. OH NO!!

I slink away, melting into the crowd. I feel SO BAD. Why did the black horse's owner use black nugget to enhance the coat of their horse? A visitor who will remain anonymous

FARMWORK SERVICES

For all types of fencing, stockyards, handyman work, tree felling, tractor work etc.



phone

Mike 09 431 6509
027 203 2694

email

farmwork.services@gmail.com

**12 tonne digger now available
for driveways, farm tracks, hole boring etc**

Kaipara Cleaning Co.

Tim & Sharlene Lord

- Pest Control
- Carpets & Upholstery
- Interior and Exterior Home Cleaning

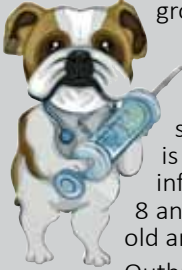
e-mail - kaiparacleaningco@farmside.co.nz
Facebook - www.facebook.com/kaiparacleaningco

Phone 021 114 6729
www.kaiparacleaningco.co.nz

Pets in the Valley

Recently I have been hearing people talk of a parvo virus outbreak in Tinopai.

Parvovirus is a disease of dogs which attacks the lining of the digestive system and causes severe vomiting and diarrhoea. Untreated animals can die, especially young puppies. It can also damage the heart muscles in young growing animals.



As with the human outbreak of measles, prevention is a lot better than treatment and vaccination can prevent a lot of suffering. The vaccine for canine parvovirus is very effective at stopping dogs becoming infected. Puppies generally get vaccinated at 8 and 12 weeks of age with a booster at a year old and then a booster every 3 years.

Outbreaks of any disease occur when not enough animals are immune to the disease and virus can spread easily between animals and properties. Parvovirus survives in the environment for long periods so your dog can catch it without even coming into contact with another dog.

Another nasty dog disease is distemper which thankfully I have never seen. As far as I can see the last outbreak in Northland was 1983 this is even more deadly than parvo and causes horrible respiratory and neurological signs.

So the more people that vaccinate their animals the better as I am quite happy not to see these horrible cases!

Happy Autumn.

Janine



From our family to yours ...reflections

Six quick months have passed since wee Hudson made his grand entrance, I can hardly believe it's been so long, yet it feels only like yesterday.

I could fill a page with my collection of clichés about children growing up, but one can't be deep and meaningful every month. Some might feel I've already shared quite enough about my personal life and every intimate detail within it, but there's always more skeletons to throw out of the closet and I feel no shame or regret at exposing my 'simply being human' to the wider community of Paparooa.

So back to Hudson ...

He's a noisy chap, as you'd expect from anyone placed in a house full of boys, but very cuddly and happy. Yes - but does he sleep, they want to know? No. No he doesn't. So nor do I. I keep running into people who tell me that so-and-so had a baby and it sleeps from 9pm-6am every night and has only ever cried twice in it's life ...

I'm sure the universe is putting these people in my path to see how triggered I can get, but I know too that at some point, he will sleep more than three hours in a row - he did once, after all.

And he will, at some point nap longer than 40 minutes - probably the day before he stops napping all together, but that's ok, because one day he will move out and I'll only see him on facebook occasionally.

So I cherish my sleepless nights, listening to him crying and feel joy at every smile he gives me, because one day, he won't be there as my little 6 month old baby, he'll instead become annoying and smelly like his sarcastic pre-teen brothers ...

Ah the joys of watching children grow!

Jenny

Need a Shed?



- Timber and steel buildings any size
- We do plans and engineers designs for council
- Farm sheds
- Commercial buildings
- Feed pad shelters
- Goat/Chicken sheds
- Horse stables
- Lifestyle sheds
- Excavation, driveways and concrete floors

Your local builder: Andre Nicolai 021 202 9854

Science Corner



Iodine

WHAT IS IT?

- A blueish, black lustrous corrosive solid.
- Belongs to the same family (halogens) as fluorine and chlorine but is not as reactive.
- It sublimates (goes straight from a solid to a gas) readily to form a violet gas.
- Its radio active form is used as a tracer in medicine
- It is a germicide and used in a 2-7% solution with water and alcohol.

WHY IODINE?

- Iodine is needed in very small amounts by man for health reasons.
- Lack of iodine during pregnancy is the leading cause of preventable mental and developmental disorders in the world.
- Iodised salt was introduced to prevent goitre (a growth on the thyroid gland in the throat) and NZ iodine deficiencies.
- Goitre was not uncommon in early NZ. Iodine deficiency problems largely disappeared after this salt was introduced but unfortunately it has begun to reappear, possibly due to people having salt reduced diets. To help resolve this, store-bought bread now contains iodine.
- New Zealand soils are lacking in iodine. During pregnancy and breast feeding it is very important that the mother has sufficient iodine. Foods such as fish, milk and eggs contain iodine and iodine tablets can be taken.
- Groups such as the Kiwanis are working world wide for the elimination of iodine deficiency disorders.

Stella

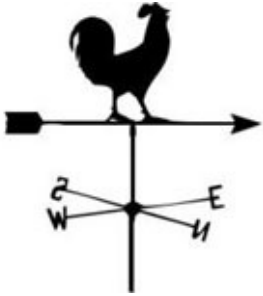
HEY, KIDS . . . JUST FOR YOU .



MAKE YOUR OWN WEATHER VANE

MAKE YOUR OWN WIND VANE AND BECOME AWARE OF THE WIND DIRECTION

Knowing which way the wind is blowing is an important yet often overlooked piece of information. Wind plays a role in many things we do and you'll know that's true if you've ever biked into a strong head wind or seen a forest fire.



WHAT YOU'LL NEED:

- ➔ An icecream container lid (or an old food container lid)
- ➔ Scissors or a craft knife (be careful and use adult help when necessary)
- ➔ A marker pen
- ➔ A skewer / kebab stick
- ➔ A straw
- ➔ A pin



INSTRUCTIONS:

1. Trace a triangle onto the icecream container lid with the marker and cut it out. Then, trace and cut out a rectangle. (You decide how big each is to be)
2. Cut a slit in both ends of the straw and slide the triangle in one end and the rectangle in the other end and glue into place.
3. Push a pin through the exact middle of the straw and then into the flat end of the skewer.
4. Place it outside where you can easily see it from the inside and you'll be able to tell which direction the wind is blowing without even having to go outside.

WHERE TO SET UP YOUR WIND VANE

1. Put your weather vane somewhere where it can show the wind direction correctly. It needs to be as high up as possible, but you need to be able to see which way it is pointing.
2. Place it as far away from any obstacles as possible. Once again you can only do the best you can.
3. Use a compass to decide where the north arm should point.

Day Camp

Well, by the time this goes to print registrations should be coming in thick and fast for April's Day Camp. Forms went out to schools and our supporting businesses on the 19th March. And, for those wondering what I'm talking about, here's the answer ...

It's three days of fun, activity, friendships, team building, life lessons and heaps more for 6-12 year olds. Run in the school holidays from 16-18th April we are limited to 180 children which means you need to get in quick. We also have room for those 13 years+ who would like to be teen leaders.

You can collect all the info from your local school, Paparoa Drapery or your local churches. Alternatively you can ring Ruth Rosser 431 8491 or Debbie Blythen 431 6892.

130 hosted for Pioneer Lunch



Ken Chambers (MC) welcomed 130 guests and Lions to the 72nd annual Pioneer Luncheon held recently at the Paparoa Memorial Hall

REX BROWNE CONTRACTING

- Limestone & Metal Cartage
- Truck & Digger Hire
- Farm Roads
- Earthwork & Dams
- House Sites & driveways
- Wrapped Silage & Hay
- Cultivation
- Fencing & Mulching



Maize Silage planting & harvesting

☎ 09 431 7556
☎ 021 720 590



first national REAL ESTATE | Roper & Jones

Tony Northcott

I have buyers looking for houses, lifestyle blocks and farms now. If you are considering selling your property, call me today for a no obligation free appraisal.

021 831 864
tony@fnkaipara.co.nz
roperandjones.co.nz



Dargaville Realty Limited Licensed REAA 2008

HOMEKILLS

WAYNE & ANNETTE

09 439 2020



Dry Aged Beef Specialists
Traditional Manuka wood smoked Bacon & Ham
No Retail
TOKA TOKA

Birt & Currie Surveyors Ltd



Local Phone
09 280-9591

**Timely,
friendly &
personal
service**

info@landsurveyors.co.nz
www.landsurveyors.co.nz
PO Box 120 Paparooa 0543

OUT & ABOUT AROUND TOWN

Our condolences go out to Graham Murray and his family on the death of Faith. A wonderful lady who will be missed by all who had the opportunity to know her.

PPI thanks Wayne Young for his voluntary work on the riverbank weeds in the centre of Paparooa. Meanwhile Tony Dodge has stepped into the role. Thankyou.

A school holiday clay modelling workshop will be

held Weds 17 April at The Kauri Museum. Bookings essential. Phone 431 7417 or admin@kaurimuseum.com for details.

Badminton is back at Paparooa Hall every Thursday from 7pm. All High School students and adults welcome, racquets are available. Come and have a go.

Although Paparooa Walking group has been lacking in numbers lately, the plan is still current and anyone is welcome to join in. Meet on Tuesdays and Thursdays at 9am at the Village Green. Libby 431 6822

Red light/green light - It appears the traffic lights at the top of Ariels Hill on State Highway 12 will be with us for a while longer. NZTA is assessing options for repairing the slip which may include cutting into the bank opposite the slip and realigning the road. The first step will be to remove a number of large pine trees that overhang the road. Watch that space.



You have to wonder why ... when an internet order for overseas goods arrives within a few days, yet parts ordered from within NZ (say Tauranga) and couriered on a 'same day courier' took 7 days to arrive?

And you have to wonder why this sort of thing happens ... Why would someone decide to wreck the picnic table on the Whakapirau foreshore dedicated to the memory of June McLeod?

HOOK, LINE & SINKER

Fishing is still very good, with plenty of snapper around in shallow water.



However there seem to be few kahawai and no gurnard.

Don't forget the fishing comp on April 6th - Pahi Boating & Fishing

Happy fishing

Max Wilson 1932 - 2019

Max was born and raised in Paparooa, the son of a farmer and a direct descendant of Paparooa's first school teacher. He bought his first block of land at age 22 on Arcadia Road, which became known as Bushy Park. Here he harvested teatree (manuka) on contract to supply 200 tons annually to Paparooa Hospital at £2.50/ton to keep their fires burning.

In 1959 Max married Ngaire Linton from Marohemo. After working in several farming jobs including shearing and sharemilking, in 1961 they were able to buy 120 acres on Arcadia Road, which became their home. To further supplement their income Max worked at the Post Office as a telephone exchange operator. They had four children and after raising them they also raised three of their grandchildren, who spoke fondly at his funeral about his kindness, good advice and his pranks, quick wit and dry sense of humour.

In 1969 Max bought his family's farm (where Grant and Glenda Blythen now live), and farmed sheep and cattle there until leaving Paparooa in 2002. He kept a keen interest in the farm after he left and they both maintained a strong bond with the Paparooa community. Max became a pillar of the community being a JP and with his involvement in the Paparooa Lions, school committees and for a time, was chairman of the St Mark's Anglican church. He was instrumental in the rebuilding of the church after it burnt down.

He will be remembered for his dedication to his family and his farm, his sense of humour, love of life and as an all round good man. PP



OHS Athletics

Otamatea High School's Athletics Championship Sports was held early in February. The day was hot and sunny day with a gentle breeze which was perfect.

Two Paparooa families made their claim to fame when the grade champions were announced. (Special mention of the three members of the same Sheppard family.)

Grade Champion Winners

Sub Junior Boys

Oscar Longdon

Intermediate Boys

Joshua Sheppard

Senior Boys

Isaac Sheppard

Senior Girls

Amyee Sheppard

Well done!





LATTO

BUILDERS

021 7727 66

House Construction, Alterations
Renovations or General Repairs



COLOUR & CUTZ

- Ladies & Mens Cuts
- Colours & Highlights
- Weddings
- Gift Vouchers

All colours & products used at the salon are organic

Salon 431 7255 Gaye 021 115 8056

OPEN TUESDAYS TO SATURDAYS

Make your Xmas appointments early
1994 Paparooa Valley Road




WHAT'S ON - APRIL 2019

The Kauri Museum open 7 days, annual passes available for Otamatea residents ANZAC exhibition opens 19 April - Textiles exhibition, 'The Perfect Accessory' Fire Emergency New Zealand. Paparoa Open Night, Thurs 4 April, 5-7pm, Depot Road, Paparoa (see pg 10 poster)
Sports & Rec Twilight Walk 6 April Pap Sports Pavillion 4pm (see pg 9)
Medical Society building official opening 4 May, 1pm (details front pg)
PCCT Twin Streams Open Day Saturday 6 April 10-2pm (for details see front pg)

REGULAR EVENTS, MEETINGS AND ORGANISATIONS

Anglican Church St Marks 1st, 2nd & 4th Sundays 10am, Hook Road, Paparoa
Arara Church 10.30am every Sunday, All welcome ph 431 6622
Art Studio, Ruawai Wed 10-12noon ph Frances 439 2554
Arty Farties Thur/Fri/Sun at the "Tile Shed"; Garage sale Sundays 10am to 2pm;
Badminton Thursdays 7pm Paparoa Hall \$2 students, \$3 adults ph Pete 431 6822
Crafternoons 1st & 3rd Wed in month, 10.30-4pm, Tinopai Hall ph Jo 431 7219
Exercise to Music Tue 10.30am Paparoa Hall \$5 ph Rose 431 7418
Farmers' Market Every Saturday 9-noon, Village Green. Contact Ruth 021 433 969
Grey Power Last Wed in month, 1pm, Anglican Church Hall, Mgt
Kaipara Marching Team Weds 4-5.30pm, M'gto, ph Rose Plunkett 431 7418
Library Temporarily closed due to pending Medical Soc building renovations
Line Dancing Thurs 10am-noon Paparoa Hall ph Rose 431 7418
Mainly Music Wed 9.30am Paparoa Comm Church, Carolyn Poyner 4316008
Mahjong twice monthly on a Tuesday. Call Marian Harkness 431 6332.
Maungaturoto Opportunity Shop Open Mon 10-1pm Wed 10-3pm Fri 10-3pm
Maungaturoto and Districts Rotary Club Maungaturoto Centennial Hall, Tuesday evenings 6pm, ph Stella 021 149 0877
Otamatea Quilters 1st and 3rd Mon month 10am, Paparoa Hall 09 439 2262
Outdoor Bowls Maungaturoto Green ph Tony 431 6026 or Brian 431 6884
Pahi Hall available for hire ph Sherryl Corbett 431 7127
Paparoa Community Church 10.30am every Sunday, 4 Hook Road 431 7106
Paparoa Garden Circle 2nd Wed of month Marg Bailey secretary. 09 280 9897
Paparoa Hall Functions venue ph Robyn 431 7306 or a/h Loraine 431 7290
Paparoa Library Closed for renovations Opening date to be advised
Paparoa Lions Dinner Meetings 3rd Mon in month 6.30pm, Sports Pavilion
Paparoa Playcentre Tuesday and Thursday 10am-1pm Visitors Welcome ph Bianca 431 6730 txt 021 782 456 or ph Jane 431 6148 paparoa@playcentre.org.nz
Paparoa Toy Library Wed 10.30-1pm, Paparoa Comm Church, Hilery 431 7330
Paparoa Volunteer Rural Fire Force (VRFF) 1st and 3rd Tuesday of the month 6.30pm Depot Rd ph Cohan 431 6668
Plunket Ready Steady Wriggle Mon 10am Sports Pav. Tina Ball 021 033 5128
Qi gong Anamana Studio, Pahi Road. John 021 135 3222
Selwyn Centre Thurs 10am for over 65's, St Marks, Hook Rd, ph 431 8193
Sports Pavilion Functions Venue Bookings ph Jane Bailey 431 6148
St Mary's Catholic Church 10am Wed, 6pm Sat, Maungaturoto
Table Tennis Tues 7.30pm, Sports Pavilion \$2 Pete 431 6822
Tennis Primary and High School ages Thurs 5pm to 6pm, Adults 6pm Thurs and Fri 9.30am; ph Sue 431 6224 or Pete 431 6822.
White Rock Gallery Open at new venue The Kauri Museum 10am-4pm 7 days
Yoga Chair Yoga - Tuesdays & Fridays, 9.30am Paparoa Sports Pavilion \$7/class Monday: 6pm Mgt Centennial Hall: Ph Jenny 021 114 3370

PLEASE UPDATE US WITH YOUR DETAILS: press@paparoa.org.nz PP

Paparoa Press PP **CLASSIFIED ADVERTISING**

Country Blooms Florist Paparoa
 Wednesday to Sunday
 Something special to order?
 Call Raylee 021-2565-893 or
 09 431-6941

Fresh local veges & herbs available at Paparoa Market. Homegrown and sprayfree \$2 packs. Paul Fluler 021 4316 645

Native trees for sale
 Pohutukawas \$5 to \$7.50
 Karakas \$5 to \$7.50
 Nikau Palms \$5 to \$10
 Phone Diane 09 431 6221

Storage Available
 In Paparoa: Secure 20 foot Containers - contact Brian Plunkett 09 4317 418
 Paparoa County Depot Trust



LOCAL TIDES for April 2019

APRIL TIDES - CALCULATED for PAHI-WHAKAPIRAU

DATE	LOW	HIGH	DATE	LOW	HIGH
1st	3.48pm	9.50am	17th	3.19pm	9.21am
2nd	4.30pm	10.34am	18th	4.08pm	10.11am
3rd	5.08pm	11.11am	19th	4.54pm	10.57am
4th	5.42pm	11.45am	20th	5.39pm	11.41am
5th	6.15pm	12.17pm	21st	6.21pm	12.24pm
6th	6.28am	12.48pm	22nd	6.42pm	1.06pm
7th	6.01am	12.21pm	23rd	7.24am	1.49pm
8th	6.35am	12.55pm	24th	8.09am	2.33pm
9th	7.12am	1.32pm	25th	8.57am	3.22pm
10th	7.54am	2.15pm	26th	9.52am	4.18pm
11th	8.44am	3.05pm	27th	10.55am	5.22pm
12th	9.44am	4.07pm	28th	12.04pm	6.31pm
13th	10.54am	5.19pm	29th	1.09pm	7.04am
14th	12.10pm	6.36pm	30th	2.03pm	8.02am
15th	1.21pm	7.20am			
16th	2.24pm	8.25am			

Community Directory

EMERGENCY: FIRE ■ POLICE ■ AMBULANCE dial 111

COAST TO COAST HEALTH CARE

Maungaturoto Medical Centre: 8am-5pm Mon-Fri 09 431 8576
 Paparoa Clinic: CLOSED TEMPORARILY - FOR BUILDING ALTERATIONS
 For urgent after hours medical service (Wellsford)..... 09 423 8086
DISTRICT NURSE Dargaville Hospital 09 439 3330
 Healthline - 24 hour service..... 0800 611 116
HOSPICE KAIPARA Dargaville Hospital 09 439 3330
KAIPARA DISTRICT COUNCIL Helpline 0800 727 059
 Mangawhai Office..... 0800 100 388
LINKING HANDS Health Shuttle Service, Maungaturoto 09 431 8969
LIONS CLUB PAPAROA Secretary Mark Pilkington09 431 7369
MAUNGATUROTO PHARMACY 09 431 8045
MAUNGATUROTO REST HOME 09 431 8696
NKT RECYCLING Huarau Road 10am - 2pm Mon-Sat..... 09 431 8304

OTAMATEA COMMUNITY SERVICES Community House 09 431 9080
PAPAROA LIBRARY Free Membership 09 431 7555
 Closed pending completion of building renovations re-opening date to be advised
PAPAROA PLAYCENTRE paparoa@playcentre.org.nz
PAPAROA PLUNKET Clinic 4317340 Cynthia Keay 0276753488
PLUNKET Helpline 0800 933 922
PAPAROA PRIMARY SCHOOLTerm 1 ends 12 April 09 431 7379
PROGRESSIVE PAPAROA INC (PPI)Graham Taylor... 09 431 7209
PARENT PORT Inc. free help for families Linda 09 425 9357
PHYSIOTHERAPY Lyndsay Bargh Mon/Wed/Fri from 8am...431 8576
PODIATRIST / FOOTCARE Jayne Short020 4022 6598
YOUTH & WHANAU FOCUS South Kaipara, Rose 09 431 7418

White Rock Gallery
 Original Kaipara Created Arts & Crafts
 5 Church Road, Matakohe
 next to The Kauri Museum
 Gallery 021 0267 8241
 Enquiries 021 250 8613
 whiterockgallerynz@gmail.com
 Like us on Facebook
 There's something for everyone!
 OPEN 7 DAYS 10am-4pm



March school events

WOW, what a busy and positive month we have had!

We were very proud to celebrate our Enviroschools Bronze status on March 4th with Eden Hakaraia our wonderful Enviroschools facilitator, Susan Karels (Enviroschools Regional Coordinator), and Cathy Erstitch (Northland Regional Council).



The Old Post Office Guest House
 Bed & Breakfast
 Deb & Kevin 09 431 6444
 www.oldpostofficeguesthouse.co.nz
 For a warm welcome
 • SMALL GROUPS OR LARGE
 • MEALS ON REQUEST
 Serving the community since 1903



Our swimming season culminated with several fantastic events - Interschool sports with Matakohe and Tinopai Schools held at Matakohe School on March 6th and our own school swimming sports on March 13th.

Twelve students represented us at the Southern Zone competition with Matakohe, Tinopai, and Ruawai schools, and Ruawai College, March 15 at Ruawai.



'Book Week' included a Scholastic Book Fair and a book character dress-up day. It's always great to see how enthusiastic our students are about reading and sharing books. Thanks to all those families who purchased books- we were able to select some terrific new titles for our library.

We participated in a Tryathlon with Ruawai Primary on the 22nd, and on the 27th welcomed Duffy Role Model, author and te reo advocate, Sharon Holt.

Julie Harper, Paparoa Primary School



Paparoa Print Shop
 At Skelton's
 Paparoa Drapery
 431 7306
 See Robyn for all your printing needs

do you need a **WEBSITE?**
 Local, friendly website design & management.
 sme-sitedesign.co.nz
 Contact Paul for more information:
 E: paul@sme-sitedesign.co.nz
 T: 09 431-7063
 M: 022 625-4156
 Get More Customers
 Cost Effective Marketing

Paparoa Fun & Games

Around 80 people turned up on the 16th of March for an afternoon of games and fun put on by the Paparoa Sports and Recreation Association, giving people a chance to get outdoors with their families.

This was the fourth annual family fun day and the numbers are increasing each year.

Six teams of all ages played each other in rippa rugby and t-ball as well as racing each other for the fastest time over an obstacle course. Tug-of-war and egg throwing was also involved, with some very messy catches, but the Fire Brigade was there to wash it all off and cool everyone down.

Ready Steady Wriggle and Playcentre provided activities for preschoolers to get messy and have fun.



The afternoon ended with a prizegiving, and sausages and hot chips cooked by Progressive Paparoa and the Lions, followed by a good old fashioned lolly scramble.

Many thanks to everyone who came, and to those that helped, including FENZ, PPI, Paparoa Lions and Sport Northland.

Next on the horizon for the Sports and Recreation Association is the **Twilight Fun Run/Walk** on Saturday 6 April starting at the showgrounds at 4pm. Register on the day from 2.30pm. Entry \$10 adults, juniors (under 18yrs) \$5, Families (up to 5) \$15. PP