



MARCH 2019

## Sports & Games Family Fun Afternoon Saturday 16 March



Paparoa Sports and Recreation Association, supported by Progressive Paparoa Inc. (PPI), Paparoa Lions and Paparoa FENZ are holding their 5<sup>th</sup> annual Family Sports and Games Fun Afternoon on Saturday 16<sup>th</sup> March from 3pm.

**ENTRY IS FREE**

**ARRIVE 3pm FOR 3.30pm START.**

Mixed teams will be made up on arrival.

T-ball, ripper rugby, tennis, egg throwing, preschool games, an obstacle course, tug-of-war and water games will be followed by a sausage sizzle and chips (for \$2), not to mention a good old fashioned lolly scramble and spot prizes for teams.

See you at the Showgrounds on the 16<sup>th</sup>.

**Bring the whole family and join the fun!**

Any enquiries call Libby Jones 431 6822 or Ken Chambers 431 7443

## 'Twin Streams' announced

### Charitable Trust names new Lifestyle Development

The most exciting new development in Paparoa for 155 years has a name. **Twin Streams** is the name carefully selected by the Paparoa Community Charitable Trust (PCCT) for its new Lifestyle Village.

"We are thrilled with the popular appeal of this name and this decision is a big step forward in the reality of a Lifestyle Village and senior accommodation planned for Paparoa", said Trust chair Graham Taylor.

Twin Streams is a name that reflects the two streams that bound the subdivision. It also signals the two aspects of the project in providing lots for senior living as well as larger lots for family dwellings and will in time become a household word in Paparoa. The Trust is confident that Twin Streams will be a place to call home for many residents. It will be a familiar neighbourhood for many of our senior residents as they downsize but continue to be part of the Paparoa community.

The new name will be used on all marketing materials, signage and communications relating to the Village. The Trust is currently preparing a dossier of information that can be presented to prospective purchasers, their lawyers and other agents. This will contain the schematic subdivision layout, prices of individual lots and information on the restrictive

covenants pertaining to the lots.

Both aspects of Twin Streams subdivision will be developed together so that the disruption of roading construction will be over before the lots can be settled.

Naming of the new road from Franklin Rd into Twin Streams and the road into the Lifestyle Village itself will be a separate process to meet Council guidelines.

### OPEN DAY 6 APRIL

An Open Day is planned for Saturday 6 April. This will allow people to walk over the site, look at the layouts which will be approximately pegged to size and gain an appreciation of the development. Trust representatives will be onsite to answer questions,

The Trust anticipates that people will fall in love with the prospect of living in Twin Streams and be keen to discuss the next steps. Trust representatives will be on site to answer questions.

Meanwhile, preliminary information can be obtained from Trust Chair Graham Taylor 09 431 7209

## Pioneer Luncheon - Friday 15 March

The 72<sup>nd</sup> Pioneer Luncheon is coming up on Friday 15<sup>th</sup> March at the Paparoa Hall. For the last few years over 100 people have been coming together at this occasion to catch up with old friends and neighbours and to meet new people. It's a great opportunity to appreciate those people whose time and energy made the the area what it is today.

Pioneer luncheons started with the descendants of the first British settlers of the district coming together, hosted in those days by the Women's Division of Federated Farmers. Now, the descendants of many of these people, plus those who have lived or worked in the district and current residents over 65, are hosted by the Paparoa Lions.

Some come from as far away as Tauranga

and Kerikeri, and some who haven't ever lived here but feel a connection with Paparoa through their heritage and love to come along.

On the day a subsidised luncheon is put on for these senior citizens, complete with musical entertainment and plenty of socialising. Doors open at 10.30am for mix and mingle with lunch at midday. Tickets are \$10. For those who already have invitations, please RSVP by 8<sup>th</sup> March.



Mangawhai's 'Totally Uked' entertained at last year's Pioneer Luncheon

Any senior citizen in the district who wishes to be put on the invitation list, please contact:

Pete Hames 09 431 6822 or email hames.jones@xtra.co.nz.



Paparoa Press PP

PUBLISHED MONTHLY BY  
Progressive Paparoa Inc. (PPI),  
for Paparoa, Pahi, Matakohē,  
Whakapirau and Tinopai.

CIRCULATION 1,050

CONTACT US - SALLY TAYLOR, EDITOR

• [press@paparoa.org.nz](mailto:press@paparoa.org.nz)

• ph 09 431 7209

• PPI, PO Box 107, Paparoa 0543

• [www.paparoa.org.nz](http://www.paparoa.org.nz)

## ADVERTISING

Rate Card available by email

Booking & Copy deadline:

15<sup>th</sup> of month

Publication date 1<sup>st</sup> of month

## Colleen and Julie star in shave campaign

"She's brave every second of every day" - this is Julie Harper's motivation for being a part of 'Shave for a Cure'.

'She' being Colleen, Julie's partner of 21 years, who was diagnosed with multiple myeloma cancer in May 2015.

This is the second time Julie has been part of such a campaign as she and two others raised over \$5000 when they shaved their heads back in 2015 for the Cancer Society (Auckland/Northland).

Colleen went through eight months of chemotherapy before a stem cell transplant in February 2016. Her cancer returned early last year and she continues to receive treatment through the Jim Carney Cancer Centre in Whangarei.

'Shave for a Cure' is Leukaemia & Blood Cancer (LBC) New Zealand's signature fundraising event, where people are sponsored to shave their head of hair. The official Shave week is from **18-24 March** and is raising money to help this organisation support patients and their families living with

these cancers. LBC has helped over 300 Northlanders in the past four years.

Julie and Colleen have become part of a nationwide advertising campaign with three other families, sharing their stories and encouraging others to take part. Julie responded to a Facebook post for LBC that was asking for volunteers to share their story. As a result of that they ended up spending a couple of days in Auckland, filming one day and audio recording the next.



You can support their fundraising campaign by going to the 'Shave for a Cure' website and searching for 'Julie Harper'. PP

**HUBAND**  
CONTRACTORS LTD.

**Need Water?**

**0800 234 449**  
OR  
**021 357 383**



**NORTHLAND'S  
BIGGEST  
BED OUTLET STORE**

**1/2 PRICE BEDS  
SECONDS & SAMPLES  
SLAT BEDS  
PILLOWS  
TOPPERS  
ADJUSTABLE BEDS  
BEDROOM FURNITURE**



**STOP BY AT THE WELL CAFÉ  
OPPOSITE US—WHEN YOU COME**

**09 439 2243**

**18 FREYBERG ROAD, RUAWAI**

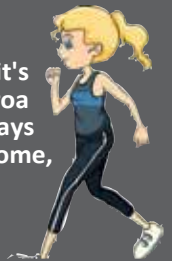
## Walking group

Now the weather's starting to cool down it's time to get back into a morning walk. Paparoa walking group meets Tuesdays and Thursdays at 9am at the Village Green, everyone welcome, different places to walk are chosen.

## Twilight Walk

Saturday 6 April is Paparoa Sports and Recreation's second annual Twilight Walk, with different length courses to suit different levels. More info to follow.

Contact Libby 021 208 0093 or [hames.jones@xtra.co.nz](mailto:hames.jones@xtra.co.nz) for either of the above and/or to be added to the email list.



**4T-DIGGER – BOBCAT – TIP TRUCK**

Property Maintenance – Driveways – Building Sites  
Stump & Tree Removal – Hole Boring – Chain Trencher  
Calf Shed and Stockyard Cleaning

**KAIPARA – WHANGAREI – RODNEY**

**Phone Matt: 021 199 6677**

**Email: [mprabrownecontractors@gmail.com](mailto:mprabrownecontractors@gmail.com)**



## Boardwalks & wash station making a difference

Good progress is being made in the work towards preventing Kauri Die Back disease infection within the Paparoa Lions Bushwalk. Our Lions Club has had three working bees in the last two months, building new boardwalks and installing a new boot wash station.

We are most grateful to NRC for supplying the boot wash station which was funded by Ministry for Primary Industries. A further station will be coming our way shortly for the Pahi Road end, courtesy of Department of Conservation.

We are especially grateful and would like to publicly thank Dargaville ITM for sponsoring



The boot wash station

the timber and hardware for the boardwalk construction.

Please support ITM Dargaville; they offer a very good service by having a Sales Rep visit our area once a week and regular deliveries with trucks and/or utes most week days.

Paparoa Lions, together with PPI, have lodged applications for



On new boardwalk

funding to complete much needed further boardwalk and steps in areas of high density kauri. If successful, the work will be carried out by contractors who are specialists in this type of work.

We also have to hand the non-slip material to put on the boardwalks, including earlier walks over the waterway, and will endeavour to apply this before winter sets in.

Paparoa Lions

### Paparoa Print Shop

At Skelton's  
Paparoa Drapery  
431 7306



See Robyn for  
all your printing needs

## PLUMBER

Kaiwaka to Ruawai

- 30 years' experience
- All plumbing services including new houses and maintenance



**ANDREW KENNY**  
ph 027 642 8320

## Open day on new bridge Community Invitation Saturday 9 March 10am-2pm

Please join us at our community day, catch up with the project team and learn more about what has been involved in keeping work on track to open the full length of the new alignment.



We'll be on Bridge No.2, which spans Matakohe River. If it's a fine day please wear a hat and sunblock as there is no shade on the bridge. Bring along a bottle of water to stay hydrated in our warm weather.

There will be parking areas directly off SH12, on the end of Bridge No.2. Look out for the orange flags and parking sign.

For safety reasons, no bicycles or animals (including dogs) are allowed on the bridge or in the car park. A BBQ will be provided with sausages and bread. See you there!

The Fulton Hogan team

## Rhoda Morrison

Consistent Award Winning Salesperson



Achieving top results  
for clients!

09-431 6912  
0274 800 691

rhoda@fnkaipara.co.nz  
www.roperandjones.co.nz



first  
national  
REAL ESTATE

Roper & Jones

Dargaville Realty Ltd  
Licensed REAA 2008

## CABINS FOR RENT



2.4 x 3.6m \$65 P/W  
2.4 x 4.2m \$75 P/W  
plus delivery & bond

INCLUDES POWER LEAD,  
CARPET, AND CURTAINS

FULLY INSULATED

Ph Keith 021 2394251

Award winning  
extra virgin olive oil



Grown on the edge of the Kaipara.  
Winner of two golds, one silver and best  
in class at the 2016 Oliveti Awards.

Order from our website  
[www.chapeloliveoil.co.nz](http://www.chapeloliveoil.co.nz)

or visit our olive grove at  
46b Merrill Road Paparooa  
Ph 09 431 7572

**REX BROWNE  
CONTRACTING**

- Limestone & Metal Cartage
- Truck & Digger Hire
- Farm Roads ◦ House Sites & driveways
- Earthwork & Dams ◦ Wrapped Silage & Hay Cultivation



**Maize  
Silage  
planting &  
harvesting**

☎ 09 431 7556  
☎ 021 720 590

**Cameron Philips  
CABINETMAKER  
Matakohe**



- Kitchens
- Custom Furniture
- Furniture repairs & restoration
- Custom run mouldings
- Stairs & Timber Doors
- Residential & Commercial Joinery

**QUALITY WORKMANSHIP**

09 431 7579

[cam@cp-cabinetry.co.nz](mailto:cam@cp-cabinetry.co.nz)  
<http://cp-cabinetry.co.nz>

## Libby's Councillor corner

Finally Kaipara has been granted some money from central government through the Provincial Growth Fund (PGF) for the **'Kaipara Kickstart'** proposal.

There are probably plenty of other parts of New Zealand which have not received any funds either. As we were the last Northland Council to have received any, we were keen for that to change. Kaipara has submitted a number of proposals through Council and some directly from groups and organisations, none of which were accepted - until now.

The three billion dollar PGF fund to be distributed over three years is to invest in regional development. Such projects are needed to help build a regional economy that is sustainable, inclusive and productive. Some regions are priority areas, (Northland included) so we hope there will be more to follow.

### KAIPARA KICKSTART

This is Kaipara District Council's proposal that has now been approved by the PGF. It is focused on roads and wharves, with a small amount to investigate food growing options in some areas of fertile soil. Some areas of fertile soils have been identified with a view to transitioning these to higher value food crops. The wharves are about opening up the harbour to tourism and local use. At this stage the funds are for a feasibility study with priority wharves being built as determined by the feasibility study.

At this stage some of this may sound far fetched but it's the beginning of a journey of investigation and thinking about things differently to enable Kaipara to benefit from increased development.

What I am most interested in

at the moment though is the money to help improve our roads. I know that is an area that causes the most frustration and genuine inconvenience for our residents. Living on a gravel road myself, we are faced with this reality daily.

However, in this round just two roads will be sealed - part of Pouto Road and Waipoua River Road. There will also be some bridges upgraded and some money to improve the unsealed network. BUT, \$27 million will not go far as we

have so many roads needing improvements. We need to spend this effectively so that we are in the line for some more.

Once we know more details regarding this grant from PGF they will be shared.

Libby Jones, 021 208 0093  
Councillor Kaipara  
District Council  
Director Northland District  
Health Board



## Lions busy summer

Paparooa Lions have had a busy time over the last couple of months with the caravan being well used at numerous events.

The old caravan has done a wonderful job of providing delicious hot dogs and chips at numerous events over many years firstly with Maungaturoto Lions and in recent years with the Paparooa club.



A&P Show attendees queue for hot food at the popular Lions caravan

The great thing about buying food from the Lions caravan is that all profits are returned to the community through donations to various groups and schools, so one can feel a little less guilty munching on hot chips! Unfortunately the caravan is getting a little too old (and too small on busy days like the A&P show) and we are currently exploring the possibility of replacing it with a more modern and slightly larger version.

Apart from the caravan, we once again supported the NKA show committee with setting up, gate keeping and packing up after a very successful show. More recently we hosted the Hibiscus Coast Motorsport Club with their rally day.

Looking ahead we have the **Pioneer Luncheon** in mid March, and this year we celebrate **40 years of Lions in Paparooa** with a special lunch on Saturday 23rd March.

We have tried to contact as many ex-members of our club as we can to invite them back to celebrate with us, but if anyone out there knows of any ex-Lions we would appreciate having their contact details so that they can be included in our special anniversary.

And then of course there's always the firewood to cut, split and deliver! Never a dull moment in this club and we're always on the lookout for new members!

Pete Hames 4316 822

## LIFESTYLE AUTOS

**Roger Price**

**Full Mechanical  
Services**

**Warrants  
of Fitness**



Paparooa Valley Road - next door to g.a.s.  
Phone 431 6620





## White Rock Gallery evolves

**AGM 5th March 7pm Paparoa Hall**

We're settling well into our new space, thanks again to The Kauri Museum for the opportunity. Our membership is increasing steadily. Members are creating high quality art and craft works with strong appeal to locals and to visitors from all over the world.

We believe this shows the need for a Community Gallery such as ours to provide an outlet for creative people in our community. Thanks also to all members doing rostered duty shifts, without you we could not be open 7 days a week, 10am-4pm. We always welcome non-artist members who may like to help us by doing a shift in the Gallery to meet and greet visitors, man the sales desk and be a 'Friend of the Gallery'.

### FOND FAREWELL TO FOUNDER MEMBERS

Sadly we bid farewell to three of our stalwarts as they pursue other interests. Sincere thanks from all White Rock members to Stu Robertson, Janice Booth and Jane Baird, for all your hard work, both on and off the committee, since the inception of the gallery in 2014. The Gallery could not have got to where it is today without your efforts, including going above and beyond with fundraising initiatives.

Stu for your Chairmanship and gallery furniture building/lighting installation skills etc., - whatever we needed - you provided it (Stu remains a Friend of the Gallery), Janice for your organisational skills as Secretary, and Jane for your dedication in the Treasurer role, making sure we were paid for our sales and balancing the books etc., not an easy job. We also farewell Jeanette Holloway, another founder



member who is now focussing more on the home front. And of course to you all for your wonderful artwork which we've so enjoyed and valued over the years and will miss. Our best wishes to you all in your future endeavours.

Also a big thanks to those former committee people who remain members of the gallery, Barbara Lee, Betty Cairns, Hanna Stevens, and Esther Thomas (hope we haven't forgotten anyone), who fulfilled their respective roles and have now stepped down for a well earned rest.

We also make special mention of our Friend of the Gallery, Faith Murray, who has helped us so much over the years, both on the committee and on the roster, who is ill at the moment. We're thinking of

you Faith and wishing you well. And best wishes to Freda Roberts, Friend of the Gallery, who has also stepped down for health reasons. We have very much appreciated your help.

**AGM: Tuesday 5 March, 7pm Paparoa Hall come along!**

White Rock Gallery will hold its Annual General Meeting at Paparoa Hall on Tuesday 5th March at 7pm. We welcome everyone who would like to come along and check us out. We will be needing a couple of new committee members and also a chairperson. If you know of anyone who would like to be part of this awesome group and help with the running of it by being on the committee, nominations can be made to the Secretary, Lorraine Littler whiterockgallerynz@gmail.com by 4th march, 5pm.

White Rock Gallery

## SHEPPARD ELECTRICAL LTD

ELECTRICAL INSTALLATION AND MAINTENANCE

**Bill Sheppard**  
Electrician



021 975 618

OR  
a/h 09 431 7196

## Starbright Wellness



Massage  
Reiki  
Reflexology

Fri/Sat  
bookings

Vicky Jennings

021 2484259

144 Franklin Rd, Paparoa

**g.a.s.**  
Petrol Service Stations

## Paparoa

Open 7 days  
Mon-Sun 6am-10pm  
09 431 6302

- Petrol, Diesel & Oil
- Fresha Valley milk 2L \$3.50
- Milk & bread combo \$5.50
- Great variety of snacks
- Pet food - cats/dogs
- Cop-Rice biscuits 20kg
- Great variety of Bait and all fishing requirements
- Top ups & prepay
- Frozen foods
- Firewood
- Hardware



## COLOUR & CUTZ

- Ladies & Mens Cuts
- Colours & Highlights
- Weddings
- Gift Vouchers

All colours & products used at the salon are organic



Salon 431 7255 Gaye 021 115 8056

OPEN TUESDAYS TO SATURDAYS

Make your Xmas appointments early  
1994 Paparoa Valley Road

Manager: Navjot Singh  
021 230 2801

## Birt & Currie Surveyors Ltd



Local Phone  
09 280-9591

**Timely,  
friendly &  
personal  
service**

info@landsurveyors.co.nz  
www.landsurveyors.co.nz  
PO Box 120 Paparoa 0543

## Keith the TV Guy Freeview digital TV



20 TV and  
9 Radio/Music  
channels are  
currently being  
transmitted.

Satellite dishes,  
decoders, cable  
etc., supplied  
and installed.

09 431 7143  
or 021 239 4251

## Medical facility receives major boost

The Paparoa Medical Society was overwhelmed by the contribution from Ready Relief Team of over \$55,000 presented at the Farmers Market recently. This sum will assist the Society in completing the renovations necessary to re-establish medical services and the Community Library in Paparoa.

Society chair, Graham Taylor said reopening these facilities as soon as possible is a top priority. This level of support is very gratifying and the Society thanks RRT most sincerely. We know the community is looking forward to being able



The cheque for \$55000 is a major boost for the Medical Society's building renovations

to access medical services in the local area without the inconvenience of travelling over to Maungaturoto.

The contractors have almost

completed the reno and the Society looks forward to reopening the building in early April. It will be a facility the community can be proud of.



## Otamatea HarbourCare

This is fantastic news. The rule of thumb in seeking funding in the not-for-profit world is that you should count on every fourth application being successful.

## Further funding for plantings

Great news for Otamatea HarbourCare. Just before Christmas notification came of success for a substantial grant from Foundation North. This means that once again we will be able to offer free plants to farmers in situations which meet our criteria, and also to assist with the cost of planting.

We can report on 100% success from our dealings with Foundation North over the last two years. It is most gratifying. The Foundation North people are great to deal with, although the online application system takes a little time.

While we nervously await the arrival of some rain to sustain last season's plantings, now is also the time to be planning plantings for the coming autumn-winter period. This means fencing and weed control. We will have about 20,000 plants to distribute for waterway and erosion-



Mark Vincent teaching the next generation about planting

prone land protection in the Maungaturoto-Paparoa-Araru area this year. Our grant will help us to meet more of the planting costs, and we are working on how to provide post-planting support as well.

If you are interested, call HarbourCare secretary Mark Vincent 431 7353 or 021 0829 8037.

## Need a Shed?



- Timber and steel buildings any size
- We do plans and engineers designs for council
- Farm sheds
- Commercial buildings
- Feed pad shelters
- Goat/Chicken sheds
- Horse stables
- Lifestyle sheds
- Excavation, driveways and concrete floors

Your local builder: Andre Nicolai 021 202 9854

## HOMEKILLS

WAYNE & ANNETTE

09 439 2020

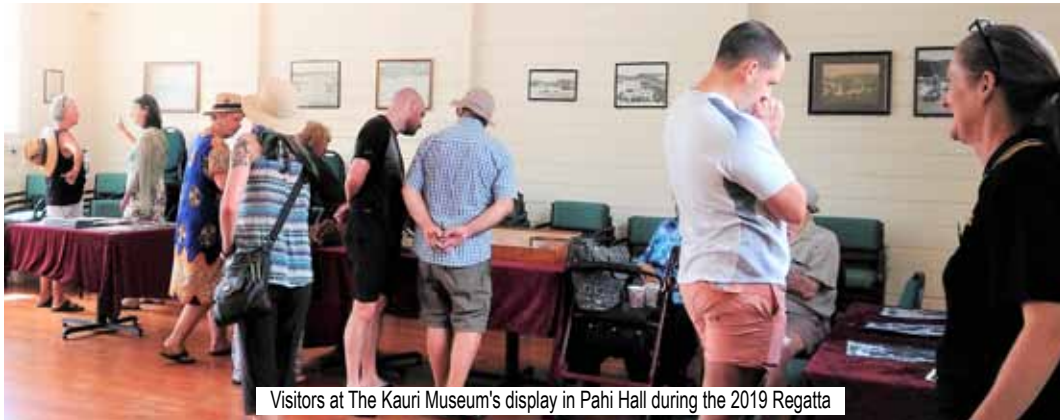


Dry Aged Beef Specialists  
Traditional Manuka wood smoked Bacon & Ham  
**No Retail**  
**TOKA TOKA**



# Museum summer season continues

It has been a very busy few weeks at The Kauri Museum for its 'Community Outreach' team. The museum has had a presence at two big local events, Pahi Regatta and the Paparoa Show and then, for the first time, at a stall in the Treaty Grounds on Waitangi Day.



Visitors at The Kauri Museum's display in Pahi Hall during the 2019 Regatta

Each stall was themed around the event being attended. Guessing games were very popular and a big drawcard. In addition, gum polishing at the A&P Show, run by our stalwart volunteers, is always a favourite with youngsters.

For Waitangi Day we travelled with Gordon Coates ('The Man from Matakoho', MP for Kaipara 1911-1943, PM of NZ 1925-28) memorabilia which included photographs from a Coates' family album taken at the very first Waitangi Day in 1934. Imagine our surprise to find that the museum's stall was sited on the same spot featured in many of the images! The Waitangi day crowd was estimated at 30,000 and growing every year. The day was such a success we've booked the same site for 2020.

### UPCOMING EVENTS

**A new textiles exhibition, 'The Perfect Accessory'** opens in March. Prepared by the collections department and assisted by textiles volunteers, this features a stunning

selection of shoes, handbags and accessories from the collection. Don't miss it.

**Anzac Day** is next up with the museum working closely with the Paparoa RSA on the organisation of this day.

**The 2019 schools' Matariki exhibition** will be extended to all schools in the Otamatea area who wish to participate. The theme for artworks will be 'shellfish found in our harbours'.

**The Northland Photography Awards** will follow Matariki, being held from June until October. This competition also has a new theme, 'This is Northland', so start thinking about your entry now.

### Museums Aotearoa's National Visitor Survey

In March, museum staff and volunteers will be working on The Kauri Museum's response to this. It entails interviewing visitors over six days and will provide museums in New Zealand with better information about their visitors at both an individual

and sector-wide level. Participating museums and galleries are able to use their individual visitor information for internal purposes such as reporting, funding applications and audience development.

### ANNUAL PASS

Just a reminder that free entry to the museum ended at the end of 2018. Although well publicised in all local papers, it seems many people missed the notice. The new Annual Pass is very good value at little more than the cost of a single admission ticket and entitles the holder to as many visits as they choose over 12 months.

Thanks again to the many volunteers who give up their time to help out at the museum. If any reader would like to assist with the National Visitor Survey please call Dr Tracey Wedge 09 431 7417. Finally, a special mention to our two gum polishing heroes at the Paparoa Show, Jo Wessel and Peter Newson.

Mary Stevens  
The Kauri Museum



**Original Kaipara Created Arts & Crafts**

5 Church Road, Matakoho  
next to The Kauri Museum  
Gallery 021 0267 8241  
Enquiries 021 250 8613  
whiterockgallerynz@gmail.com  
Like us on Facebook

**There's something for everyone!**  
**OPEN 7 DAYS 10am-4pm**

**ADAM STEVENS**  
BUILDER

Licensed Building Practitioner

For new builds, alterations and roofing

021 741 363 A/H 09 431 6245



**CLEMENTS FENCING**  
For all your yard and fencing requirements

021 636 912  
oclements@ubernet.co.nz

## M.K. Weber Sawmiller

CONTACT Marek by phone or drop into the mill  
94 Tinopai Road, 09 431 7170

**WE SELL:**

- Pointed Electric Fence Battens
- 1st & 2nd Grade Fence Battens
- Retaining Wall Timber
- Weather Boarding
- Rough Sawn, Gauged & Dressed Timber
- Private Milling Undertaken



**Timber cut to ANY size to suit your order**



# LATTO

## BUILDERS

021 7727 66

House Construction, Alterations  
Renovations or General Repairs





## Maungaturoto and Districts Rotary Activities and service

By the time you read this we will have run our first major fundraiser for the year with the McSweeney Bros band resulting in a good donation for the Dementia Unit.

The year started off with two low-key activities - the Presidents' BBQ and a pleasant Pot Luck Dinner evening at Pahi. Visiting places like this makes me realise how many gems we have in our area.

We are supporting the Waihoua Marae and hope to help them with their new entrance way. The bridge over kauri roots on the track in Nikau Grove will soon be completed and now that the track has been metalled we can all make full use of this beautiful piece of bush. We've also been asked to help Maungaturoto Primary's Envirogroup to create a track down to the stream at the end of their playing field.

Some Rotarians volunteered at the Paparoa Show. Listening to visitor comments, it's certain that it is one of the few A&P shows with such a large indoor section running alongside the animals and sideshows.

Later in March we will support OHS Year 12 students at a Northland course to learn about driver's licence obligations. While this does not involve actual driving, it deals with relevant aspects of car ownership and driving. Remember, for those with a Learner's licence - we offer 12 free lessons through Te Roroa. If you are interested, please call them on 0800 555 635.

The long-term impact of some of the work that Rotary has undertaken in the past was brought to our attention. A pontoon built in 2003 for the Mangawhai estuary in an effort to dissuade swimmers from bridge jumping is still well used, despite occasional storms necessitating a search for, and the reinstallation of it.

We always welcome new members so if you are interested please talk to any Rotarian. Eileen Parsons



## Ruawai Charity Auction

Saturday 16 March from 9am

Ruawai Lions are holding their annual auction again this March at the Kaipara Kumara forecourt, Jellicoe Road, Ruawai.



The 2018 auction in full swing

The trading table starts at 9am, viewing of the goods going on auction is at 9.30am and the auction itself starts at 10am. Products donated by our sponsors which includes farming items will be auctioned along with items such as antiques, furniture, electrical appliances and household goods. There will be toys, books, clothes, bric-a-brac and much more on sale at the trading table. Food and refreshments will be available (bring cash).

Contact Jim Simpson 09 439 2557 or 021 315 246 to arrange collection of any goods you think will be suitable for sale.

We look forward to your support!

Ruawai Lions



**first national**  
REAL ESTATE

**Roper & Jones**

**Tony Northcott**



I have buyers looking for houses, lifestyle blocks and farms now. If you are considering selling your property, call me today for a no obligation free appraisal.

021 831 864  
tony@fnkaipara.co.nz  
roperandjones.co.nz

Dargaville Realty Limited Licensed REAA 2008

## OCS March news



Already we're into March and school is well and truly back into full swing, work has been back for a month or so and some people say they feel like they never stopped for Christmas. And for a lot of people, life just continues to roll along, one day after another, and it can be hard to remember just what day it is especially those who have retired and they feel "like it's one long holiday."

Whatever your situation is, we wish for happiness and good health for all.

If life is being a little less than kind to you, for whatever reason, our wonderful team of supportive professionals may be able to help. We're here for you, so please call in to your Community House or phone us on 431 9080:

### We offer the following:

- Senior Support
- Parent Coach
- Social Worker/Family support
- Counsellor
- Addiction Support

### OTHER ACTIVITIES INCLUDE:

**Seniors' community lunch** at St John Hall on the first Wednesday of each month

**Chocolate bingo** at the Footprints Room, Anglican

Church, Maungaturoto on the 3rd Wednesday

**Shopping trips to Whangarei** on the second Tuesday and the fourth Wednesday each month

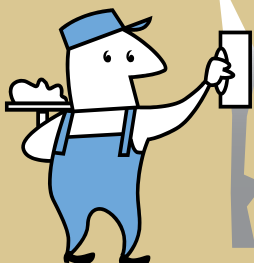
### PUB CHARITIES GRANT

We would like to offer our very grateful thanks to Pub Charities, who were so generous in granting OCS the funds required to purchase the mini-bus. Without their support we could not provide this service to the many groups within the Otamatea district who have made use of it over the past twelve months, and already the calendar for 2019 is filling fast.

The Team at OCS  
155 Hurndall St  
Maungaturoto

## TINOPAI PLASTERERS

WE GUARANTEE THE HIGHEST QUALITY FINISH



35 Years experience in...

- GIB Stopping
- Fibrous Plastering

for FREE quote, call us now!  
Trevor 021 0300 073



## Mike and Sue's story Part 2

When Sue and Mike Plunkett set off for their four week adventure in Europe there were many different parts to their plans. As detailed in the February issue, part was for the Le Quesnoy 100 year centennial but on the Plunkett side of the family they were following another story, as well as making the most of their time in Europe.

We left New Zealand in mid October and had a 24 hour stop-over in vibrant, busy, and dirty Hong Kong before arriving in Ireland. We set off for Drogheda (north of Dublin) for an important reason of this trip, Mike's great-great-great-uncle Oliver.

Saint Oliver Plunkett was born in the region and trained for priesthood in Rome. He was ordained in 1654 and became the Archbishop of Armagh in 1669. He spent a lot of time in Drogheda, introduced Jesuits to the area and opened many schools. At that time many Catholics were not allowed to practice their religion openly, so he helped them in secret until he was betrayed. He was arrested, taken to London and in 1681 he was hung, drawn and quartered, then beheaded. His head was then thrown into a fire but, incredibly, was retrieved by nuns. His head, intact but still with visible



Mike at the shrine with Saint Oliver Plunkett's head in St Peter's church, Drogheda, Ireland

scorch marks, now sits in a shrine in St Peter's church, Drogheda where thousands of pilgrims visit each month to

view this precious relic of the Irish Church.

We visited this remarkable piece of our history, and spent four days looking at amazing castles and monasteries as old as the 6th century. After meeting up with family we visited Dunkirk and Ypres in Belgium - cities totally destroyed and rebuilt in both

world wars.

Going through the castles and sights in all the many countries we saw, the most amazing factor for us was the amount of destruction in Europe during the wars, and the remarkable resilience and strength of the people in rebuilding their towns and cities time and time again. The wonderful, vast amount of history compared to little New Zealand is truly incredible.

Finishing off with four days in London we did all the touristy things that one must do when there. Our highlight was celebrating Remembrance Day for the 100 years since WW1 with several million other people, and leaving knitted poppies (thanks Bill Ponsonby) on the New Zealand War Memorial in Hyde Park.

Sue & Mike Plunkett  
with Maggie Hames

## Dementia Unit fundraisers

March will be a busy month for fundraising and other events. Maungaturoto Community Charitable Trust (MCCT) members were on hand at Paparoa Show to further publicise the project.



Best trade site at the A&P show. MCCT Dementia Unit Fundraising Team  
Nona Rogers, Margaret King NKA Judge, Craig Fergus, Don McKay

**THE DEN** is back in full swing after the holidays with plenty of new stock coming and going. The garage sale over the weekend of 2-3 February went exceptionally well bringing in around \$2500. Come and check us out, Bickerstaffe Road, Maungaturoto (on the way down to Otamatea High School).

### MCSWEENEY BROS WITH MARION BURNS

The Maungaturoto and Districts Rotary Club put on entertainment and dancing with well known Irish band McSweeney Bros featuring Marion Burns on fiddle in Maungaturoto Centennial Hall on 2 March. Profits after expenses are all going towards the Dementia Unit.

### 9 HOLE AMBROSE GOLF

On 9 March the Paparoa Golf Club will host an Ambrose Golf Tournament followed in the evening with entertainment and a spit roast at the Maungaturoto Country Club. Entries (\$120 - team of 4) to Kenny Finlayson (kenkintail@gmail.com) or Jamie Ewen.

Further info: facebook MCCT fundraisingcommittee

Or contact: Ady 027 4075 709  
Cathy 021 310 420

Again all profits to the Dementia Unit fund.

### ST PATRICKS DAY BOWLS

March 17th the Maungaturoto Bowling Club will hold their usual fun and shennanigans day. All welcome!

Albie Paton

# YOUR TYRE SPECIALIST

Providing **60** years of service  
in the heart of Kaipara.

- Tyres
- Brakes
- Wheel Balancing
- WOF
- Suspension
- Batteries
- Servicing
- Alignment

### Garnetts Tyre Service

📍 2 Gorge Rd, Maungaturoto

☎ 09 431 8255

**BRIDGESTONE** TYRE CENTRE



## Iconic Pahi Regatta

The Pahi Regatta at Anniversary Weekend at the end of January was a grand success. Nineteen boats turned up for the launch race and about six for the runabouts.

The boaties looked like they had a wonderful weekend. Sadly us 'Pahitian' boaties were too busy with the other goings on to participate much in our own regatta, causing our club to be lower in the final tally of results between clubs.

A most positive thing was that the marquee had a great summer's afternoon atmosphere and a dancing one in the evening. 'No Entry' were the entertainment that got everyone's foot-a-tapping and a floss-a-waxing!



The Launch Race at the 2019 Pahi Regatta



Spectators keenly await the start of Sunday's bath tub racing

Plenty of food was around to satisfy hungry participants and spectators, with the usual hamburgers, chips, hot dogs and the famous mussel fritters. The dinner hangi was a sell out!

For the Ladies Race I managed to 'hitch hike' on a runabout and due to the adrenalin and excitement coursing through my veins, I managed a faithful second! (Thanks to Chris Westlake who helped out on the day manning the safety boat.)

We had many donations, especially for the Miss Pahi competition. The kids get such a confidence boost on entering, and for those that didn't get prizes there was a lolly scramble.

All in all it makes it worthwhile to carry on this tradition that's been going for **137 years**, nearly a century and a half. That's incredible! See you next year.

Elarna Sheppard



## PAPAROA FARMER'S MARKET

EVERY SATURDAY VILLAGE GREEN 9-12  
 EFPOS AVAILABLE  
 STALLHOLDERS CONTACT  
 RUTH 021 433 969  
 GOODLIFESOAP@GMAIL.COM

## 'Left Hand Made' @ Market

Viv and David of Dargaville trading as Left Hand Made have been regulars at the Paparoa Farmers Market over the past few months. All their items for sale have been re-fashioned from materials which would otherwise have been dumped.



**Why 'Left Hand Made'?** David's left handed; he's the handy man ... and no doubt Viv's 'left hand man'.

**How long?** We've been doing this for about a year now.

**What are you making to sell?** Bags of all sizes, girls clothing - skirts and dresses. There are also baby's bibs, aprons, hats, mesh bags (shopping), reusable make up pads and the list keeps growing...

**How did this project come about?** Viv loves to sew; it's great therapy she says. Using offcuts and remnants that would otherwise have been thrown out and fabrics taken from good second hand clothing she whizzes up all this very saleable and affordable merchandise.

**Where?** Find them at the market every Saturday.





## 2019 starts on a roll

The 2019 school year has started very positively. The children are all keen to be back, and are enjoying new learning opportunities.



### SWIMMING POOL

With the hot weather our pool is being well used. Already our students are demonstrating increased water confidence and building on swimming skills learnt in previous years.

### SCHOOL CAMP

Our Years 3-6 students spent three days (February 20-22) at Moirs Point, Mangawhai and had an absolute blast.



### BRONZE ENVIROSCHOOL STATUS

We achieved Bronze Enviroschool Status late last year and look forward to celebrating this milestone on March 4th with our Enviroschools facilitator, Eden Hakaraia, Susan Karels (Enviroschools Regional Coordinator), and Cathy Erstitch from Northland Regional Council.

### BUILDING IMPROVEMENTS

All the new building improvements which were being done over the holidays have now been completed and we are extremely pleased with the results.

### COURT AREA FUNDING

We are also incredibly excited to have received funding to replace our court area which has been out of use since the beginning of Term 4 2018. We anticipate that this project will be completed in time for the start of Term 2.

Julie Harper, Paparoa Primary School

## Latest ORT show coming soon

We are delighted to have secured the rights to one of Disney's best-loved shows, Beauty and the Beast JR.

The cast is comprised entirely of children and teenagers - everyone is under 18. This is a condensed version, specially adapted for youngsters, the show being a bit more than an hour long.

Beauty and the Beast tells the story of Belle, an adventurous young girl, and the Beast, her hideous captor who is a young prince trapped under a spell. To break the spell, the Beast must learn to love another and earn her love in return - before time runs out. With the help of the castle's enchanted staff, including a loving teapot, a charming candelabra, and a nervous mantel clock, Belle and the Beast find a beautiful friendship and love that neither knew was possible.

The show features classic songs from the Academy Award-winning film score such as 'Be Our Guest' and 'Belle', as well as some original songs from the 1994 Tony-nominated Broadway musical.



Pictured is Matai Hartles who plays the role of Lumiere - the debonair Maitre d'. This is another major role for him as he was Mowgli in the 2017 production of 'Jungle Book'.

There will be eight shows -  
 Sat 27 April @ 2pm & 6pm  
 Sun 28 April @ 2pm & 6pm  
 Fri 3 May @ 7.30pm  
 Sat 4 May @ 2pm & 6pm  
 Sun 5 May @ 2pm

Tickets are on sale now at Tony's Lotto Shop in Maungaturoto, and online at [www.ort.org.nz](http://www.ort.org.nz)

Maura Flower  
 Otamatea Repertory Theatre

Otamatea Repertory Theatre Inc  
*Proudly presents*



Music by  
**Alan Menken**

Lyrics by  
**Howard Ashman and Tim Rice**

Book by  
**Linda Woolverton**

**Show dates:**  
 April 27, 28 @ 2pm & 6pm  
 May 3 @ 7.30pm, May 4 @ 2pm & 6pm, May 5 @ 2pm

Tickets online at [www.ort.org.nz](http://www.ort.org.nz)  
 Or at Tony's Lotto Shop, Maungaturoto  
 Adults \$28 Students \$15

Disney's Beauty and the Beast JR is presented through special arrangement with and all authorized materials are supplied by Music Theatre International, 411 West 54th Street, New York, NY 10019

## SHOP & BREW

**Moonshine & Curios**

**Home Brew Supplies**

**Great Gift Ideas**

**Layby Available**

Wed-Fri 10am-4pm

Sat 9am-3pm

Sun 10am-2pm

1994 Paparoa Valley Rd

**09 431 6547**



## Bees bees bees

Having just read an article in the Guardian (UK) I am now out planting in the garden.

As a child living in the country my friends and I just took for granted the clouds of little purple moths floating above the pennyroyal, the drone of the bumble bee and the freakishly long stick insects. We haven't seen too many of these in recent years. The insects need our help, more than 40% of our insects are declining and a third endangered. A global scientific review alleges that we are looking at the collapse of nature's ecosystem, ecosystems that are essential for the function of life as we know it.

Planting for flowers all year around is the thing to do. Flowers of different sizes and shapes, flowers of the carrot family (small flowerets in flat topped umbels) salvias for the wool carder bee, daisies, red valerian for the moths, heliotrope, hebes, and manuka! Buckwheat and Phacelia flowers are great pollen producers.



Most native insects need native plants. The kowhai, Sophora species, coprosma, certain pittosporums, NZ flax, cabbage trees, hoheria, and pseudopanax.

And those small piles of rough bark, or rubble make fantastic homes for the small insects that we need in the garden. Not spraying near flowering plants is also essential for bee and insect life.

Autumn is a great planting time. Let's do it.

P.S. As a side note it is believed light pollution is responsible for a decline in nocturnal insect numbers, maybe we need to check we have turned outside lights off more often.

Deb  
<https://www.theguardian.com/environment/2019/feb/10/plummeting-insect-numbers-threaten-collapse-of-nature>

## FENCING SPECIALISTS

CALL CHRIS HICKEY ON 027 561 1719 email: [fencingspecialists.nz@gmail.com](mailto:fencingspecialists.nz@gmail.com)



**ALL ASPECTS OF FARM & LIFESTYLE BLOCK FENCING & MAINTENANCE INCLUDING:**

- Post & Batten • Entrances
- Post & Rail • Retaining Walls
- Stock Yards • Riparian Lots
- Netting • Subdivision

## The summer garden

As this hot dry summer continues it's a challenge to keep any crops producing. My son-in-law made up a curved plastic downpipe to hook into the washing machine's water outlet pipe and it's hanging over the window sill to reach buckets below. Great to put a bucket full of this grey water around a fruit tree at a time.

I've found that of all bean varieties Dwarf Butter Beans and Purple King Runner Beans cope well in these summer conditions and they continue producing without becoming stringy. These were mulched in November, the ground in between rows watered well and manured, followed by thick layers of wet newspaper covered with lawn clippings. As well as keeping the ground moist and cooler for longer through the season, there are very few weeds when the plants are removed at end of production and the mulch has broken down and it's easy to dig over.

After harvesting of the potato patch (which was also mulched) and digging the ground over, a winter green crop of mustard was sown and is now coming up. This crop which doesn't seem to allow many weeds to grow amongst it, helps to rejuvenate the soil and will be dug in early August allowing time for it to break down before sowing/ planting in October.

February/March is the time for preserving surplus fruit (bottled or frozen in containers) along with veges to be made into pickles and sauces.

In the flower and rose gardens its important to cut the dead heads off to encourage them to produce another flush of colour before autumn planting starts.

Jan Robertson

- Enjoy -

**MONDAY**

**Pizza Special**

Just **\$15**

**FROM 3PM EVERY MONDAY**

**• PAPAROA HOTEL •**

[www.paparoahotel.nz](http://www.paparoahotel.nz) (09) 431 7359



## How To Heal Yourself With Sound

Do you remember how the universe started? No? Neither do I! But according to the Bible it all began with the Word of God. Does it matter what the word was? No, I don't believe so, what matters is it's essence which is

According to quantum physics once you get beyond the cellular, molecular and atomic features of all organisms and material objects, the essence of everything is vibration or energy. Everything vibrates at specific measurable frequencies.

Now, you might be wondering what that means for you ...

Have you ever noticed how your body feels when you play relaxing music and the way it reacts when there is a loud crash from the next room? I bet one moment you're feeling all relaxed in your own little world and the next you're wondering whether to fight or run.

Does this sound true?

So, if you are in an environment with lots of noise and disturbance, can you imagine how stressed your body might get? Every time we are affected by something in our environment which creates a fight or flight response our



body creates an inflammatory response which is not so good for longevity or physical health. On the vibrational level, this means that some part of our body no longer functions at its optimum frequency and is not as efficient.

The good news is that there are powerful frequencies which can mean that the effects of damaging sounds can be reduced, a myriad of

vibration.

diseases can be healed and the prevalence of harmful mental states and physiological conditions can be decreased.

Where do you find these frequencies and how can you use them?

You can find them in soothing relaxation music, binaural beats, guided meditations or spending time barefoot in nature to connect with the Earth's frequency for just 10-20 mins a day.

You can also receive sound healing.

### SOUND HEALING

Sound healing can come in a variety of forms including the use of Tibetan Singing Bowls. These can be placed next to or on the body and the high vibrations that are emitted help to imprint a higher vibration on the body, any thing that is vibrating in a low frequency simply can't stay in that environment and has to change or be released.

## Sound Energy Massage

*Relax Body. Calm Mind. Revitalise Spirit  
Sound Healing with Tibetan Singing Bowls*

### Introductory Special

\$20 for

30 min Session

More info & bookings contact

**Carrie: 0210 576 184**

Carrie@SelfNurture.org

fb.me/soundenergymassage

Location: **Paparoa**

EXP 31 May 2019

The overall effect is that these higher frequencies, introduced by the Singing Bowls, help to relax your body, calm your mind and revitalise your spirit. It's like an accelerator to a calm, meditative state. Perfect if you understand the purpose of meditation but struggle to quiet your mind. It can also help release tension in muscles, stagnant energy in the gut, lift your mood and so much more.

For more info contact:

Carrie- 021 057 6184

fb.me/soundenergymassage

## Pets in the Valley

Hope your summer is going well and the water supplies are holding out for both house and stock.

I had a request for answers to the questions in the Kids' Challenge at the Paparoa Show - from parents of course, so here goes:

The sheep weighed 114kg, while the donkey weighed 86kg - yes the sheep was a lot heavier than Kong even though he is shorter!

Peaches the horse is palomino in colour; the



sheep was a wether and a Suffolk; wool is measured in microns; a male donkey is a jack; a female horse is a mare. The massive egg was laid by an ostrich. The next biggest egg was laid by the goose and the blue egg was laid by the araucana hen (the grey one). The twist was that the brown chook laid the white egg!

So a lot of fun was had, the animals were very well behaved, and the overall winner took home a drone donated by Wilson Contractors.

Thanks to all the helpers that made everything go so well at this year's A&P show.

Janine

## Paparoa Store

Proudly Supporting Paparoa

**OPEN 7 DAYS**

**Monday-Saturday 7am-6pm**

**Sunday 9am-5pm**



We stock a great selection of

CONFECTIONERY, ORGANIC, DELI, MEAT, FRUIT, VEGES, FROZEN GOODS, BEER, WINE and a wide range of grocery items at excellent prices

DVD's \$1 to \$8 per night

EFTPOS NZ HERALD POST CENTRE

**Phone / Fax 431-7320**

**Cnr. Franklin Road and State Highway 12**

## Cosmetic Chemistry

We are always so careful about what we put inside our stomachs, we read the ingredients panel to check on sugar, fat, salts, colourings, preservatives etc in the foods that we buy, but when it comes to products that we put on our face, many of us are not so discerning ... yet. Here are five ingredients used in skincare which do not add any value or nutrition to your skin and my simple guide on how to recognise them.

**1. PERFUME** is the number one skin irritant that can cause sensitivity. It's used to mask unpleasant smells from other chemical compounds in the product and is a cue for quality and efficacy. How many times have you opened a skincare product, take a sniff, then exclaim "oh that smells delicious!"?



**2. COLOURANTS** - the two most common colours used in skincare are yellow and pink. Yellow masks the oxidation process. For example if you cut an apple and leave it for a few minutes, it oxidises and goes brown. Same with products. As soon as you open the lid, the ingredients oxidise (especially Vit C) becoming brownish. The yellow tint hides this. Light pink connotes softness, gentleness and luxury.

**3. PRESERVATIVES** are nasty and you don't need to be a chemist to spot a product with preservatives in it. If it's something that you can open, dip your fingers in it every day, leave it in the bathroom and it still looks and smells delicious after several months, then you know for sure it has preservatives in it.

**4. MINERAL OILS** (sometimes called paraffin, liquid paraffin, white oil, paraffin oil or if they want to be really posh, paraffinum liquidum); a liquid by-product from refining crude oil to make gasoline which gives a feeling of softness and smoothness. It glides onto your skin acting like 'glad wrap', but forms an occlusive film which can cause pores to clog up.

**5. EMULSIFIERS** - this one is not so easy to identify as there are many agents that can act as emulsifiers. If you look on the label of your products, anything with PEG in it is an emulsifier, and other common ones are triethanolamine and polysorbates. Emulsifiers bind to the skin and 'dissolve' the natural skin lipids which hold cells together, causing the skin to become 'leaky'. The skin suffers from trans-epidermal water loss, becoming drier and drier. This is the beginning of an impaired skin barrier.

Have fun checking the ingredients on your products!

Nina Quan Skin Therapist  
Skin Image- Paparoa & Waipu

## Elva celebrates her 95th

Elva Heath (nee Leaf/Sheppard) celebrated her 95th birthday on 21 February. Family celebrations started on Saturday 16th and continued through the week as family and friends gathered for a 'chat' and a 'cuppa' catching up on old times. Elva keeps excellent health, she's still an avid gardener and continues to enjoy her propagation endeavours. She's looking forward to catching up with former 'old' friends at the forthcoming annual Pioneer Luncheon.



## I've been thinking about ... Democracy

I vote. I help elect people to make decisions to enable the governance of clubs, local bodies or the nation. To be honest I'm glad to let someone else do the reading, attend the meetings, and listen to all the opinions so that they can make informed decisions about issues.

The problem occurs when the elected representative realises that job security depends less on making the right decision and more on making a popular decision. So the pressure is on. Either educate the public to the politicians point of view or find out what the public thinks. KDC has created a Peoples Panel to canvas public opinion. A reasonably sensible initiative, not too costly and it might even elicit some interesting ideas as long as nobody really believes that the Panel's members are necessarily either well informed or truly representative.

The most extreme form of opinion research is the binding referendum.

Consider Brexit. A close result ending with a hospital pass to Theresa May. How many of the millions of voters had really

considered the implications of Brexit? I'm prepared to bet, not many. Most people would have listened to anecdotal evidence and then voted emotively on a sort of Make Britain Great Again agenda. Now they're talking about another referendum!

Closer to home there's pressure for a referendum on legalising marijuana. Sure we all have some knowledge of the problem. Sure we have opinions and these opinions should be expressed.

I believe our MPs should be making the decisions. It's their job to be cognisant of the ideas, the research, the logistic implications for law enforcement, health providers and so on. A referendum would be a costly exercise and the ultimate political cop out.

Let's wait and see.

RS



# LANCE KEAY CONTRACTING LTD

- Effluent Pond Cleaning
- Round Bale Hay & Silage
- Rippling & Discing
- Power Harrow & Air Seeder
- Under Sowing
- Gerse/Scrub Mulching
- Conventional Balling

Ph: 09 431 6308  
E: lancekeaycontracting@farmside.co.nz

**PH: 021 383 908**



## Kaipara Cleaning Co.

Tim & Sharlene Lord

- Pest Control
- Carpets & Upholstery
- Interior and Exterior Home Cleaning

e-mail - [kaiparacleaningco@farmside.co.nz](mailto:kaiparacleaningco@farmside.co.nz)  
Facebook - [www.facebook.com/kaiparacleaningco](http://www.facebook.com/kaiparacleaningco)

Phone 021 114 6729

www.kaiparacleaningco.co.nz





## From our family to yours ... Sober peace

It is not my intention to judge, I am just sharing my experience, the nature of which will trigger some people, but let those feelings come up to be seen if you are brave - that's why we feel, release old patterns, or ... it's a choice to continue to repress and have such feelings explode in other places in our lives.

Intuitively we know when things are healthy or not - it's not rocket science that if you eat and drink crap for long enough, you are going to feel yuck. But some things have such powerful cultural and social power behind them, that intuition goes out the window.

I was a binge drinker for years, the most socially accepted drug in NZ culture. For 10 years I longed to get off the train of drinking, hangovers, depression and overeating that all stem from the alcohol.

I tried to fool myself that I can have one drink, and be ok - and sure, I was, but that opened the door for next week having two, and then back I would go into the cycle of up/down drinking. I am not a person who can have one quiet drink with dinner (congrats if you are).

But I am happy to be sober - I don't need to be drunk to do stupid, embarrassing stuff, believe me! My contentedness with MY sobriety has ruffled those who aren't ok to relax without alcohol.

Somehow, my soberness is a threat to the idea that fun can only be had when drunk. Friends have disappeared, and I'm ok with that. My real true friend, is myself, and as a mum, I don't want to teach my boys that vomiting weekly from excess alcohol is a healthy way to have fun. Having a drunken cry or laugh is not really truly expressing and releasing feelings - and I only see this now from the other side.

My journey has been a long one, but I wanted to share this because I know there are others going through similar experiences, feeling alone on that cycle of shame, guilt and hate. We are never alone, it just takes real courage to take personal responsibility for our hurt. I chose to no longer be a victim to alcohol, I reclaim my 'spirit', I take my power back.

Jenny

## Letters from The Old Post Office

### Mirror Mirror on the wall...

Dear Reader,

Once again food for thought has been plated up from that unlikely venue, the Shed. Yes, into the valley of unlikelihood one has wandered and found sustenance. Conversation between the shed habitués frothed (please note Steinlager reference) and eddied as bodies relaxed, tongues loosened and ears (mine and the dog's, the cat was not interested) pricked to the alert.

The topic de jour seemed to focus on 'appearance'. Please, Reader, suspend disbelief for a moment and consider the stalwarts engaged in this dialogue. The years range from middle years to ... well, just plain old. Hair at various stages of dispersal, hearing (as previously discussed) largely absent, tee shirts stretched around little tum tums, and teeth, like hair, going steadily west. Yet, despite the accepted truism that 'women will only be equal to men, when they too can walk the street, balding and overweight and think they are sexy', the semi-permanent residents of the Shed, were discussing this very mindset.

The dog and I (the cat was busy looking after himself) stared at each other and wondered for a moment if we had entered a parallel, genderless universe. Be still our beating hearts we thought and listened even harder. The ironing could wait. We pressed closer to the connecting door. Voices boomed and lowed as the cud of intellect was chewed. It seems that while the shed inmates acknowledge that their default setting is simply to assume man's superiority and their right to evaluate the lesser sexes' qualities, they are struggling with the knowledge that this thinking is wrong.

Well, the dog and I reeled. Strong measures were needed. The glass of Freixenet for moi, and a bowl of organic milk for le chien. The cat woke up. After his needs were sorted, the evening assumed a mellow hue and I realised tomorrow would be just another day.

And perhaps "Let us be grateful to the mirror for revealing to us our appearance only". Samuel Butler

Deb



## Painter & Decorator

Tradesmans quality work guaranteed



- Interior
- Exterior
- Spray finishes
- Roofs
- Waterblasting

For your free quote call Mike 021 529 025

## Place your Ad here

reaching your community for only \$25/month

all proceeds from advertising go toward community projects

contact Paparoa Press

09 431 7209

press@paparoa.org.nz



## Kaipara Physiotherapy

LYNDSEY BARGH PHYSIOTHERAPY

**Paparoa Medical Centre**  
**CLOSED TEMPORARILY**  
**09 431 9062 or 09 439 1656**

**Maungaturoto Medical Centre**  
**Mon/Thur/Fri (pm)**  
**09 431 9062**

**email: lyndseybargh@callplus.net.nz**


## BATTENSBY Bros.

**CONTRACTING LTD**

- Firewood (WINZ approved)
- Ground Cultivation
- Fencing
- Silage and Hay
- Fertiliser Spreading



**Glenn 021 983 734 Ross 021 983 594**  
**Ph: 09 431 6186 Email: battenbybrothers@xtra.co.nz**




**PETE  
THE  
BUILDER**  
*your local friendly builder*

**Peter Clark**  
Ph: 0276 713 416  
petethebuilderltd@gmail.com


582 Pahi Road, R D 1, Paparoa, 0571  
A/hrs 09 431 6005

**The  
Glass Guy**



**Phone Colin  
09 431 6595**

**AL's Upholstery**  
**Alan Hilton**



**Automotive  
Furniture  
Covers  
Seats**  
**over 30yrs experience**  
**021 0709101**  
**100 Petley Rd, Paparoa**

**do you need a  
WEBSITE ?**  
**Local, friendly  
website design  
& management.**  
sme-sitedesign.co.nz

Contact Paul for more information:  
E: paul@sme-sitedesign.co.nz  
T: 09 431-7063  
M: 022 625-4156

**Get More Customers  
Cost Effective Marketing**

## The Weather - the Climate

What's the difference?  
What about climate change and global warming?

In Junior Science at school students are taught the definitions of words such as weather and climate but many probably soon forget them. Well this is how it appears to me with some comments in the news lately.

**Weather** happens on a daily basis - "today the weather is warm and cloudy with showers" or on another day it may be "cold and rainy".

**Climate** is average weather over a long period of time.

### SOME FACTS

**Greenland's** ice sheet is melting faster than ever before due to climate fluctuations. Not so much the glaciers but more so the gigantic ice sheet that covers the land. Water from the ice sheet runs into the ocean.

This is thought to be caused by a rise of 1 degree C in average temperature and it could affect ocean currents.

**Antarctica** is losing ice six times faster than it was just 40 years ago.

**Climate change** is any significant long term change in the expected patterns of average weather. Is a rise overall of just over 1 degree Celsius in the world in the last few years actually 'climate change'?

**Global warming** does not mean that the weather gets uniformly warmer. In fact it means that weather patterns will change due to changes in sea and air currents.

### Weather extremes

Warmer air can carry more water than cool air, which can lead to extreme snowfalls and floods. Wavy shifts in the jet stream can create conditions for monster blizzards. It possibly results in more extremes of wet and dry, and definitely more heat waves. And overall the weather becomes more unpredictable.

This is probably an overly simplified explanation but hopefully it may clarify some terms frequently used these days.

Stella

## Science Corner



### Lithium - what is it?

Lithium is used widely as a lightweight component of batteries in cellphones, computers, in fact anything that requires long lasting lightweight batteries. Specially designed batteries for pacemakers etc can last up to 15 years. We are all probably using them in our phones, computers and electric cars. Maybe we should know more about it?

- It is the lightest metal, and is solid under ordinary conditions.
- As are all alkaline metals, it is extremely reactive and must be kept under oil to prevent it from catching alight. Therefore it is only found naturally as a compound joined with other substances.
- It is used in mental health medication to treat mood disorders such as bi-polar (it does have side effects.)
- Lithium is number 33 on the list of the earth's crust components so if we continue to use it up without recycling (batteries) it could become less available.
- Most lithium batteries are made in China (they do recycle batteries).
- Lithium is mined in Australia from an igneous crystalline hard rock known as pegmatite.
- Chile, Argentina and Bolivia have huge salt flats known as the South American lithium triangle. Mining lithium from these requires a huge amount of water, a commodity in short supply.
- A great income earner for the countries? What happens when it runs out? Who makes most of the profit? Large international companies? Who cleans up the mess?
- Use of lithium batteries is expected to grow with the use of electric cars and bikes.

Stella

## HEY, KIDS . . .



### A SU - DO - KU PUZZLE FOR YOU

Fill the grid so that every column, every row and every 3x3 box contains the digits 1 to 9.

4		1	2	9		7	5
2			3		8		
	7			8			6
			1		3	6	2
1		5				4	3
7	3		6		8		
6				2			3
		7			1		4
8	9			6	5	1	7



## Day Camp 2019 - April school holidays

You can definitely mark our dates on your calendar now and know that the first week of the holidays is covered. Yes the dates are Tues 16th to Thurs 18th April. For those parents and grandparents who haven't caught up with what we are up to then here is a quick rundown.

This event is organised by the churches of our area with community support. Our Day Camp is three days in the great outdoors, designed for us to learn, experience and create. About 180 children are bused in from our surrounding areas for the day and returned home for the night. On the last day parents arrive to see what the children have been up to, stay for a bbq then take their tired but happy children home.

Each day we start with 'tent



Activities at Day Camp 2018

time', learning songs, listening to dramas and watching puppet shows relating to our Biblical theme. Next we split into age groups and disappear into the surrounding bush (fenced) to build huts. These are always amazing creations. We learn to build campfires and cook

a sausage over the fire (fire ban permitting) before going to electives which range from arts and crafts to horse riding, dam building or even go-karting. So many choices and not enough

days to do everything. Back to the tent for more songs etc by which time (hopefully) the children are running out of buzz and ready to go home on the buses. Day 3 is slightly different but just as much fun with judges coming in to look at our wonderful bush huts.

So if this sounds like a plan for your family then watch out for registration forms and posters available mid March. Your local school will have these and various shops in your community.

Till next time, mark those calendars and enjoy your day,  
Debbie Blythen

## Community Connexions - Arty Farties Inc.

### MARCH ALREADY!

Well, our stolen gate came back- it was found under the old shearing shed on the A&P grounds. Who took it? Well we do know who returned it! What an amazing bit of laughter to begin the year with.

The weather? It's been hot, hot, hot.

Our gardens have been supplying us with a massive amount of vegies for food banks and other hungry people. Now we are preparing the gardens for autumn- broad beans (yum), silver beet, cabbages, cauliflower, broccoli, winter lettuce- all of those lovely vegies. The gardens are being turned over, weeded and fertilized in readiness for the next bumper crop.

Dairy farmers worrying about grass, weather, money- it's all getting tight- and it impacts on us all in our farming communities. We, the survivors out there, just keep getting on with it and win in the end!

Cheers from us all at Arty Farties

Quote of the month:

"Your mind is a garden - your thoughts are the seeds.  
You can grow flowers - or you can grow weeds."

## THE KAURI MUSEUM

Real New Zealand Heritage

What's on at your Museum

### Exhibitions:



- \* Textiles 'The Perfect Accessory'
- \* Twelve Holiday Hotspots
- \* Heritage Rose Collection

For residents of the old Otamatea District: Annual passes available

5 Church Road, Matakoho, Northland. p: 09 431 7417 w: www.kaurimuseum.com

## KMU SURVEYS LTD

MAUNGATUROTO

Ken Urquhart

Licensed  
Cadastral  
Surveyor

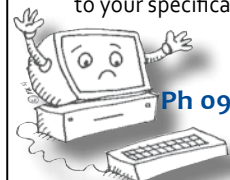


**09 431 8705**  
**021 161 2344**

kenurquhart@xtra.co.nz

## R & D MACDONALD COMPUTERS

Call Ross with your computer problems & repairs  
He'll even build a computer to your specifications



Ph 09 431 6221

email: ross@paradisebreeders.co.nz

# Crompton Engineering Ltd

Phone/fax 09 439 2393  
31 Jellicoe Road, Ruawai



Hay Racks  
- covered  
or uncovered

Palm Kernel  
Trailers



website: [cromptonengineering.co.nz](http://cromptonengineering.co.nz)  
email: [crompton.eng@xtra.co.nz](mailto:crompton.eng@xtra.co.nz)

## HOOK, LINE & SINKER

Fishing is very very good at the moment. You only need to go a short way out from Pahi to catch some good ones.



There's plenty of snapper. A 10kg one caught this week by a fisher staying at the camp ground.

It only takes a couple of hours to catch the limit, and you only need a few 'feet of water'.

Well, fish are being caught in just one and a half meters of water to be precise.

There's also been a few nice kahawai and some gurnard caught.

Happy fishing

## OUT & ABOUT AROUND TOWN

**Our condolences** to the Brethren community on the death of Paul Boakes. Paul was well known and was the owner of Maugaturoto Auto Centre in the past.

**Congratulations** to LeeRoy son of Miriam and Meshach Adomea who married Norbryn in the church on Saturday 23rd. The couple live and work in Australia.

**Have you wondered?** Why do we say 'As mad as a March hare'? It means 'completely mad!' Apparently hares are totally mad in March (in the Northern Hemisphere) when it's mating season.

**A question to ponder** - If lithium batteries last so long, why do defibrillator batteries have to be changed every 2 years at a cost of about \$400? (See science pg 16 'Lithium'.)

**Ruawai Lions annual 'Music in the Garden'** starts 2pm Sunday 31 March at Dorothy and Jim Simpson's, 82 Simpson Road, Ruawai. Admission: Adults \$10, 5-16yrs \$5, under 5's free, family \$25. Food and

refreshments for sale (cash only), raffles, BYO alcohol, bring a chair/rug and enjoy. For further info contact Jim or Dorothy 09 439 2557 or jdsimpson@slingshot.co.nz Proceeds to Ruawai's First Response vehicle

**Like to join tennis?** It's held at 5pm Thursdays for all school students (Primary and Secondary). For adults it's 6pm on Thursday and from 9.30am Fridays. Phone Sue 431 6224 or Pete 431 6822.

**Matakohe School's** Ambrose Golf Tournament on 9 April at Paparooa Golf Club, is a fundraiser for the bike track

Anglican Church  
Paparooa Mission District

**Notice of AGM**  
Sunday 24 March 2019  
11am

Footprints Room  
Holy Trinity Church,  
Hurndall St Maungaturoto  
All parishioners and  
visitors welcome  
S. Skelton, Secretary

and development of other physical activities. Enquiries/tickets at Matakohe School or email Wendy Sheppard bot@matakohe.school.nz

## Mother-of-all eleagnus

We were working on the opposite side of the stream from the Paparooa school and came across the mother of all eleagnus (amongst a swathe of smaller ones) which has now been successfully removed by new arrival to the area and weed group member, Cameron.



Eleagnus covers about 40% of this bank so was well on the way to displacing the bush. The battle continues and we will be back in this area to finish clearing it of this weed on Sunday March 10. Meet at the Paparooa School carpark at 9am.

Ph Jacque 021 488 822 or just come along

## Notification of weed control

TAG Vegetation Control (on behalf of Northland Regional Council) are still planning to treat tree and Chinese privet on roadsides of SH12 between SH12 (Brynderwyn) and 200m beyond Matakohe East Rd during March (in good weather). The work planned for February just hasn't happened as yet.

Herbicide (metsulfuron-methyl 600 with organosilicon penetrant) will be applied by hand-held spray gun or stems drilled and filled. Stringent regulations will be adhered to. Signs will be out to indicate where they are working at any one time.

To find out more call Jacque Knight 021 488 822 or Guy Forbes (TAG vegetation Control) 027 483 7209

**Paparooa Motor Camp**  
CABINS | TENTS | CARAVANS | MOTORHOMES  
17 Pahi Rd, RD1, Paparooa, Northland. Ph: 09 431 6515 Email: paparoomotorcamp@xtra.co.nz

Set in a quiet rural area, within easy walking distance to picturesque village with shopping facilities, a general store & post office, service station, restaurant, friendly country pub, takeaways, café, gallery, bush walks. Only 6kms to the Matakohe Museum.  
[www.paparoomotorcamp.co.nz](http://www.paparoomotorcamp.co.nz)

holidayparks  
ASSOCIATION OF NEW ZEALAND  
MEMBER

## FARMWORK SERVICES

For all types of fencing, stockyards, handyman work, tree felling, tractor work etc.



phone

**Mike 09 431 6509**  
**027 203 2694**

email

[farmwork.services@gmail.com](mailto:farmwork.services@gmail.com)

**12 tonne digger now available**  
**for driveways, farm tracks, hole boring etc**



**WHAT'S ON - MARCH 2019**

**The Kauri Museum** open 7 days, annual passes available for Otamatea residents  
**Exhibitions:** Heritage Rose Collection;  
 Textiles exhibition, 'The Perfect Accessory'  
**Matakohe Bridges Open Day** 9 March 10-2pm (see pg 3)  
**Dementia Unit fundraiser** 9 March Ambrose golf tournament (see pg 9)  
**Pioneer Luncheon** 15 March Paparoa Hall (see details Front Page)  
**Ruawai Lions Charity Auction** 16 March from 9am Kaipara Kumara forecourt  
**Sports afternoon** 16 March Sports & Rec 3pm (see Front Page)  
**Ruawai Lions' Music in the Garden** Saturday 31 March Ruawai (see pg 18)

**REGULAR EVENTS, MEETINGS AND ORGANISATIONS**

**Anglican Church St Marks** 1st, 2nd & 4th Sundays 10am, Hook Road, Paparoa  
**Ararua Church** 10.30am every Sunday, All welcome ph 431 6622  
**Art Studio, Ruawai** Wed 10-12noon ph Frances 439 2554  
**Arty Farties** Thur/Fri/Sun at the "Tile Shed"; Garage sale Sundays 10am to 2pm;  
**Crafternoons** 1st & 3rd Wed in month, 10.30-4pm, Tinopai Hall ph Jo 431 7219  
**Exercise to Music** Tue 10.30am Paparoa Hall \$5 ph Rose 431 7418  
**Farmers' Market** Every Saturday 9-noon, Village Green. Contact Ruth 021 433 969  
**Grey Power** Last Wed in month, 1pm, Anglican Church Hall, M'gto  
**Kaipara Marching Team** Weds 4-5.30pm, M'gto, ph Rose Plunkett 431 7418  
**Library** Temporarily closed due to pending Medical Soc building renovations  
**Line Dancing** Thurs 10am-noon Paparoa Hall ph Rose 431 7418  
**Mainly Music** Wed 9.30am Paparoa Comm Church, Carolyn Poyner 4316008  
**Mahjong** twice monthly on a Tuesday. Call Marian Harkness 431 6332.  
**Maungaturoto Opportunity Shop** Open Mon 10-1pm Wed 10-3pm Fri 10-3pm  
**Otamatea Quilters** 1st & 3rd Mon month 10am, Paparoa Hall 09 439 2262  
**Outdoor Bowls** Maungaturoto Green ph Tony 431 6026 or Brian 431 6884  
**Pahi Hall** available for hire ph Sherryl Corbett 431 7127  
**Paparoa Community Church** 10.30am every Sunday, 4 Hook Road 431 7106  
**Paparoa Garden Circle** 2nd Wed of month Marg Bailey secretary. 09 280 9897  
**Paparoa Hall** Functions venue ph Robyn 431 7306 or a/h Loraine 431 7290  
**Paparoa Library** Closed for renovations Opening date to be advised  
**Paparoa Lions** Dinner Meetings 3rd Mon in month 6.30pm, Sports Pavilion  
**Paparoa Playcentre** Tuesday and Thursday 10am-1pm Visitors Welcome  
 ph Bianca 431 6730 txt 021 782 456 or ph Jane 431 6148 paparoa@playcentre.org.nz  
**Paparoa Toy Library** Wed 10.30-1pm, Paparoa Comm Church, Hilery 431 7330  
**Paparoa Volunteer Rural Fire Force (VRFF)** 1st and 3rd Tuesday of the month  
 6.30pm Depot Rd ph Cohan 431 6668  
**Plunket Ready Steady Wriggle** Mon 10am Sports Pav. Tina Ball 021 033 5128  
**Qi gong** Anamana Studio, Pahi Road. John 021 135 3222  
**Selwyn Centre** Thurs 10am for over 65's, St Marks, Hook Rd, ph 431 8193  
**Sports Pavilion** - Functions Venue Bookings ph Jane Bailey 431 6148  
**St Mary's Catholic Church** 10am Wed, 6pm Sat, Maungaturoto  
**Table Tennis** Tues 7.30pm, Sports Pavilion \$2 Pete 431 6822  
**Tennis** Primary and High School ages Thurs 5pm to 6pm, Adults 6pm Thurs and Fri  
 9.30am; ph Sue 431 6224 or Pete 431 6822.  
**Waka Ama** Tue & Thu 5pm, Sun 10am, Pahi Domain, ph Grant 027 474 3856  
**White Rock Gallery** Open at new venue The Kauri Museum 7 days  
**Yoga:** Chair Yoga - Tuesdays & Fridays, 9.30am Paparoa Sports Pavilion \$7/class  
 Monday: 6pm M'gto Centennial Hall: Ph Jenny 021 114 3370

PLEASE UPDATE US WITH YOUR DETAILS: [press@paparoa.org.nz](mailto:press@paparoa.org.nz) PP

**Paparoa Press** PP **CLASSIFIED ADVERTISING**

**Country Blooms Florist Paparoa**  
 Wednesday to Sunday  
 Something special to order?  
 Call Raylee 021-2565-893 or  
 09 431-6941

**Fresh local veges & herbs** available at Paparoa Market. Homegrown and sprayfree \$2 packs. Paul Fluler 021 4316 645

**Native trees for sale**  
 Pohutukawas \$5 to \$7.50  
 Karakas \$5 to \$7.50  
 Nikau Palms \$5 to \$10  
 Phone Diane 09 431 6221

**Storage Available**  
 In Paparoa: Secure 20 foot Containers - contact Brian Plunkett 09 4317 418  
 Paparoa County Depot Trust

**Does your organisation have something interesting to tell the community?**  
 contact Paparoa Press email preferred  
[press@paparoa.org.nz](mailto:press@paparoa.org.nz)  
 09 431 7209

**LOCAL TIDES for March 2019**

**MARCH TIDES - CALCULATED for PAHI-WHAKAPIRAU**

DATE	LOW	HIGH	DATE	LOW	HIGH
1st	2.46pm	8.22am	17th	2.40pm	8.38am
2nd	3.30pm	9.32am	18th	3.44pm	9.46am
3rd	4.20pm	10.24am	19th	4.40pm	10.43am
4th	5.01pm	11.07am	20th	5.30pm	11.33am
5th	5.39pm	11.43am	21st	6.17pm	12.20pm
6th	6.13pm	12.16pm	22nd	6.37am	1.05pm
7th	6.25am	12.48pm	23rd	7.21am	1.49pm
8th	6.57am	1.19pm	24th	8.05am	2.32pm
9th	7.28am	1.49pm	25th	8.49am	3.16pm
10th	8.00am	2.21pm	26th	9.35am	4.02pm
11th	8.34am	2.56pm	27th	10.25am	4.53pm
12th	9.13am	3.35pm	28th	11.24am	5.51pm
13th	9.59am	4.22pm	29th	12.34pm	6.24am
14th	10.56am	5.20pm	30th	1.49pm	7.41am
15th	12.06pm	6.31pm	31st	2.56pm	8.54am
16th	1.25pm	7.19am			

**Community Directory**  
 EMERGENCY: FIRE ■ POLICE ■ AMBULANCE dial 111

**COAST TO COAST HEALTH CARE**  
 Maungaturoto Medical Centre: 8am-5pm Mon-Fri .... 09 431 8576  
 Paparoa Clinic: CLOSED TEMPORARILY - FOR BUILDING ALTERATIONS  
 For urgent after hours medical service (Wellsford)..... 09 423 8086  
**DISTRICT NURSE** Dargaville Hospital ..... 09 439 3330  
 Healthline - 24 hour service..... 0800 611 116  
**HOSPICE KAIPARA** Dargaville Hospital ..... 09 439 3330  
**KAIPARA DISTRICT COUNCIL** Helpline ..... 0800 727 059  
 Mangawhai Office..... 0800 100 388  
**LINKING HANDS** Health Shuttle Service, Maungaturoto 09 431 8969  
**LIONS CLUB PAPAROA** Secretary Mark Pilkington .....09 431 7369  
**MAUNGATUROTO PHARMACY** ..... 09 431 8045  
**MAUNGATUROTO REST HOME** ..... 09 431 8696  
**NKT RECYCLING** Huarau Road 10am - 2pm Mon-Sat..... 09 431 8304

**OTAMATEA COMMUNITY SERVICES** Community House 09 431 9080  
**PAPAROA LIBRARY** Free Membership 09 431 7555  
 Closed pending completion of building renovations  
 re-opening date to be advised  
**PAPAROA PLAYCENTRE** ..... paparoa@playcentre.org.nz  
**PAPAROA PLUNKET** Clinic 4317340 Cynthia Keay ..... 0276753488  
**PLUNKET** Helpline ..... 0800 933 922  
**PAPAROA PRIMARY SCHOOL** ..... 09 431 7379  
**PROGRESSIVE PAPAROA INC (PPI)** .....Graham Taylor... 09 431 7209  
**PARENT PORT Inc.** free help for families Linda ..... 09 425 9357  
**PHYSIOTHERAPY** Lyndsay Bargh Mon/Wed/Fri from 8am...431 8576  
**PODIATRIST / FOOTCARE** Jayne Short .....020 4022 6598  
**YOUTH & WHANAU FOCUS** South Kaipara, Rose ..... 09 431 7418



# Paparoa A&P Show 'a real cracker'



Show Day on February 2<sup>nd</sup> saw a great turnout of competitors, trade sites and visitors to the annual summer event held by the North Kaipara Agricultural Association in Paparoa.

Showgoers were entertained by musical renditions from the Whangarei District Brass Band and Stampede Country Rock Band. Circus Kumarani provided all-day activities with fun circus skill workshops, and the Kid's Country Challenge event proved hugely popular with both parents and kids, one of the drawcards being friendly farm animals.

The equestrian ring had a record number of entries turn up for the day's events as did the New Zealand dairy goat section with some 32 entries being shown.



In the cattle ring, despite lower entries, there was still an excellent turnout of superbly presented animals and handlers including the calf section.

Mid Northern Team Roping Club's show day events also drew a favourable crowd who were treated to some spectacular riding and exciting action.

The indoor section was well supported - 119 excellent entries in the dahlia section created a magnificent display. Entries from all ages - school work plus a special section for children, vegetables, fruit and flowers, arts and crafts, knitting and sewing, photography, homebrew, baking and preserves -



amazing evidence of the many home industries still undertaken today.

North Kaipara Agricultural Association Incorporated would like to extend grateful thanks to all volunteers, entertainers, sponsors, trade stallholders, competitors and visitors for making Paparoa A&P Show such a memorable event.

Liz Clark  
North Kaipara Agricultural Association Inc (NKKA)



first national REAL ESTATE | Roper & Jones

first national foundation Partnership supporting National Burn Centre

We put you first

Do you know how much your property is worth?  
Call us for a free no obligation appraisal.



RACHAEL DEVRIES



RHODA MORRISON



KARYN HODGSON



ANDREA CLARKE



TONY NORTHCOTT



CRAIG CLEMENT



GARY MORRIS



SHEILA BOON



MICHELLE TOMLINSON



JILL WILSON



JOHN POWELL



SHAR DÖRNER



ADRIANNE ASTLEY

110 Victoria Street, Dargaville  
143 Hurncall Street, Maungaturoto

www.roperandjones.co.nz

09 439 7295  
09 431 1016

Dargaville Realty Ltd  
Licensed Agent  
REAA 2008